

Devolinx STE-501C/502C

1/2-Port Ethernet Serial Server



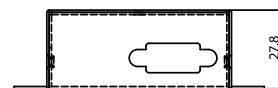
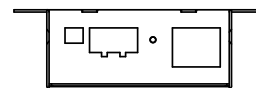
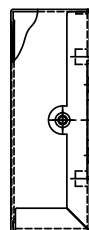
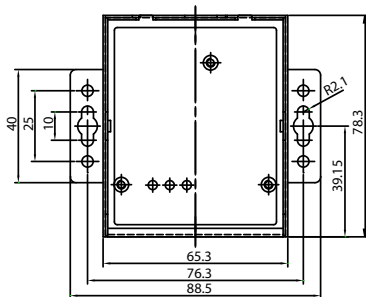
Features

- ▶ Rugged Metal Case with DIN-Rail / Wall-Mount
- ▶ 15 KV ESD Protection for Serial Signals
- ▶ 10/100Mbps Fast Ethernet Full Duplex Auto Negotiation
- ▶ Supports Multiple Link Mode with TCP Server/Client, UDP, and Virtual COM Mode
- ▶ Monitor, Manage, and Control Industrial Field Devices Remotely
- ▶ Configurable via Built-In Web Server, Serial Console, or Telnet
- ▶ Windows Base Utility for IP Configuration
- ▶ Compact Size
- ▶ Upgradeable Firmware from Remote-PC via Ethernet

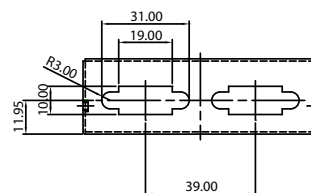
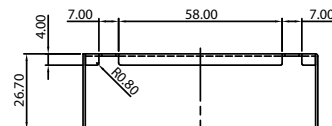
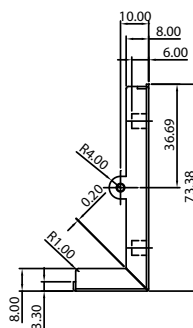
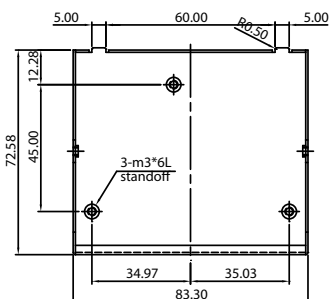


▶ Layout / Dimensions (unit = mm)

STE-501C



STE-502C



► Specifications

CPU

16-bit Embedded CPU

Flash Memory

512 KBytes

SDRAM

512 KBytes

EEPROM

512 Bytes

Network Interface

10/100Mbps Fast Ethernet

Network Protocol

TCP/IP, UDP, HTTP, SNMP, ARP, Telnet, ICMP, BOOTP, DHCP

Reset

Built-In Reset Key to Restore Defaults

Serial Interface

RS-232/422/485

Serial Connector

DB9 Male

Serial Communication

Data Rate: 1200 ~ 230400 bps (230Kbps)

Characters: 7 or 8 Data Bits

Parity: None, Even, Odd, Mark, Space

Stop Bits: 1 or 2

Flow Control: Xon/Xoff, RTS/CTS

LED Indicators

LAN, RUN, and COM

Software

Windows OS Based Configuration Utility, Virtual COM Software

Configuration

Web (HTML), Telnet, Serial Console, and Configuration Utility

Power Requirement

9 ~ 30VDC

Power Consumption

3 Watts

Operation Temperature

0° C to 60° C (32° F to 140° F)

Storage Temperature

-20° C to 85° C (-4° F to 185° F)

Operation Humidity

20% to 90% (Non-condensing)

Dimension (W x H x D)

STE-501C: 65 x 80 x 28 mm (2.56 x 3.15 x 1.10 in.)

STE-502C: 85 x 75 x 28 mm (3.35 x 2.95 x 1.10 in.)

Approvals

FCC, CE

Warranty

5-Year Warranty

► Comparison

Model	STE-501C	STE-502C	STE-601C	STW-601C
Number of Ports	1 Port	2 Ports	1 Port	1 Port
Case Design	Commercial	Commercial	Industrial	Industrial
Flash Memory	512KB	512KB	512KB	10MB (2MB for Bootloader)
SDRAM	512KB	512KB	512KB	32MB
Wireless LAN	No	No	No	Yes
Serial Connector	DB9 Male	DB9 Male	DB9 Male 5 Pin Terminal Block 8 Pin Mini-DIN	DB9 Male 5 Pin Terminal Block 8 Pin Mini-DIN

► Ordering Information

STE-501C

1 Port Ethernet Serial Server, RS-232 / 422 / 485, DIN-Rail/Wall-Mountable

STE-502C

2 Port Ethernet Serial Server, RS-232 / 422 / 485, DIN-Rail/Wall-Mountable

*** POWER ADAPTER SOLD SEPARATELY ***

Optional Accessories

PA-STX-US

Power Adapter for STE-501C (USA)

PA-STE502-US

Power Adapter for STE-502C (USA)

PA-STX-EU

Power Adapter for STE-501C (Euro)

PA-STE502-EU

Power Adapter for STE-502C (Euro)

DIN-RAIL-KIT

DIN Rail Mounting Kit

Aaxeon Technologies

445 Capricorn St.
Brea, CA 92821
USA

Toll-Free: (877) AAXEON5 (229-3665)

Phone: (714) 671-9000

FAX: (714) 671-9944

e-Mail: info@aaxeon.com

aaxeon
www.aaxeon.com