

P1127E-500 NEW

12.1" XGA TFT Expandable Industrial Touch Panel Computer with 7th/6th Gen Intel® Core™ i7/i5/i3, Celeron® & Pentium® Processor and 1 PCI/PCIe Slot

Features

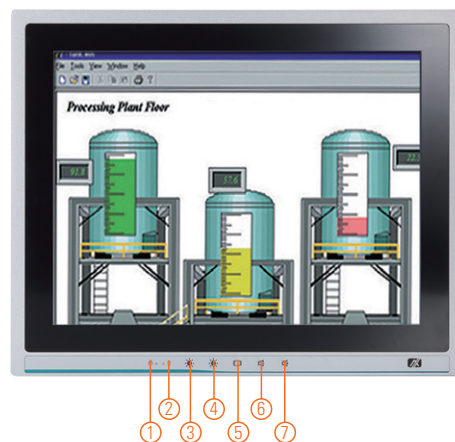
- 12.1" XGA TFT LCD display
- LGA1151 socket 7th/6th gen Intel® Core™ i7/i5/i3, Celeron® & Pentium® processors
- Intel® H110 chipset
- Less screw design for easy installation
- 4 USB 3.0, 2 USB 2.0 and 4 COM
- One PCIe x4 or one PCIe slot
- Built-in speakers and optional Wi-Fi 802.11 b/g/n module
- Robust IP65 compliant aluminum front bezel
- 5 OSD keys in front panel



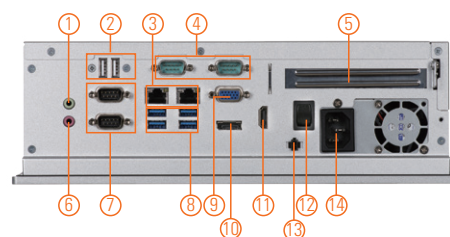
▲ Side view



▲ Back view



1. Display status LED
2. SATA status LED
3. Brightness -
4. Brightness +
5. Display monitor ON/OFF
6. Volume -
7. Volume +



- | | | |
|---|-------------------------------|---------------------------------|
| 1. 1 x Line-out | 6. 1 x Mic-in | 11. 1 x HDMI |
| 2. 2 x USB 2.0 | 7. 1 x RS-232/422/485 (COM 1) | 12. 1 x Switch for power on/off |
| 3. 2 x RJ-45 for Gigabit Ethernet | 1 x RS-232 (COM 2) | 13. 1 x Remote Switch Button |
| 4. 1 x RS-232 (COM 3) | 8. 4 x USB 3.0 | 14. 1 x AC Plug |
| 1 x RS-232 (COM 4) | 9. 1 x VGA | |
| 5. 1 x PCI or 1 x PCIe x4 Card expansion slot | 10. 1 x Display Port | |

Introduction

The P1127E-500 is a multimedia 12.1" touch panel PC for kiosk application. It has a fashionable mechanism design and industrial-grade material front bezel which can avoid damage from chemical corrosion. To meet the demands of multimedia application, the P1127E-500 is powered by a high performance LGA1151 socket 7th/6th generation Intel® Core™ processor with the Intel® H110 chipset. It features four COM ports, two Gigabit Ethernet and up to 32GB memory of dual-channel DDR4-2133 that delivers high computing capability for high performance-demanding applications. The industrial touch panel PC is most suitable for kiosk, factory and automation.

Expandable for 1 PCIe or 1 PCI

The P1127E-500 has 1 PCIe x4 or 1 PCI slot for expansion purpose. User can easily plug in standard half-size PCI or PCIe card based on any application needs.

Speaker and WLAN Antenna Supported

The P1127E-500 features built-in speakers for kiosk application to display multimedia content program. It also supports WLAN module antenna (optional) for wireless network connectivity.

Friendly Less Screw Design

The P1127E-500 is designed with easy of maintenance in mind. There are only three screws on the back chassis, so that technicians can quickly remove the system's back cover with minimum effort.

Specifications

| | | |
|-------------|---|---|
| Front Bezel | Aluminum w/ IP65/NEMA 4 rugged protection | |
| LCD Panel | Display Type | 12.1" XGA TFT LCD |
| | Brightness | 500 nits |
| | Resolution | 1024 x 768 pixels |
| | Viewing Angle | 160°/140° |
| Main System | CPU | LGA1151 socket 7th/6th gen Intel® Core™ i7/i5/i3, Celeron® & Pentium® processor |
| | Chipset | Intel® H110 |
| | System Memory | 2 x 288-pin DDR4-2133 Long-DIMM, up to 32GB |
| | BIOS | AMI UEFI BIOS |
| | Storage | 1 x 2.5" SATA HDD |
| | Drive | N/A |
| | Watchdog Timer | 255 levels, 1 ~ 255 sec. |

* All specifications and photos are subject to change without notice.

Specifications

| | |
|---------------------|--|
| IO Connector | 3 x RS-232 (COM 2 ~ 4) 1 x RS-232/422/485 (COM 1) 1 x HDMI 1 x VGA 1 x DisplayPort 4 x USB 3.0 2 x USB 2.0 2 x 10/100/1000 Mbps Ethernet (Intel® i219LM/i211AT) 1 x Audio (Mic-in/Line-out) 1 x Remote Power Switch |
| Expansion Interface | 1 x PCIe x4 or 1 x PCI |
| Touchscreen | 5-wire resistive type Light transmission 79% 1 million activations (typical) at a single point |
| Power Supply | 100 ~ 240 VAC, 200 W |
| Power Consumption | TBC |
| Dimensions | TBC |
| Packing Dimension | TBC |
| Weight(net/gross) | TBC |
| Environment | Operating temperature: 0°C ~ +50°C (+32°F ~ +122°F) Relative humidity: 10% ~ 90% @ +40°C, non-considering Operating vibration: 1.0G, 5 ~ 500 Hz, random |
| Certificate | CE |

Ordering Information

| | |
|--------------------|--|
| P1127E-500 w/ PCIe | 12.1" XGA expandable industrial touch panel computer with LGA1151 socket 7th/6th gen Intel® Core™ i7/i5/i3, Pentium® & Celeron® processor, resistive touch screen and 1 PCIe x4 slot and 100 ~ 240 VAC |
| P1127E-500 w/ PCI | 12.1" XGA expandable industrial touch panel computer with LGA1151 socket 7th/6th gen Intel® Core™ i7/i5/i3, Pentium® & Celeron® processor, resistive touch screen and 1 PCI slot and 100 ~ 240 VAC |

* Specification and certifications are based on requirements and may vary.

Optional Accessories

| | |
|--------------|---------------------------------|
| 82211270210E | VESA & wall mount kit |
| 82231870240E | Wireless LAN kit (Sparklan251N) |
| E981604011 | ATC10 (VESA arm clamp type) |
| E981604012 | ATW10 (VESA arm wall mount) |
| E983100017 | VESA desktop stand (black) |

Optional OS Installation

Skylake: Windows® 7/8.1/10

Kabylake: Windows® 10 64-bit

Dimensions

