

CEM843

COM Express Type 6 Compact Module with Intel® Atom® Processor E3845

Features

- Intel® Atom® processor E3845 (Bay Trail)
- 2 DDR3L-1066/1333 SO-DIMM, up to 8GB
- Max. up to 6 lanes of PCIe
- 2 SATA-300
- 8 USB 2.0 and 1 USB 3.0
- TPM 1.2 supported

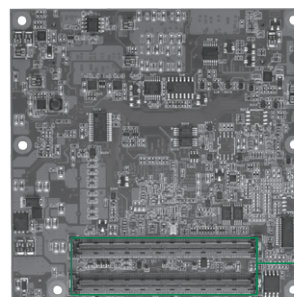
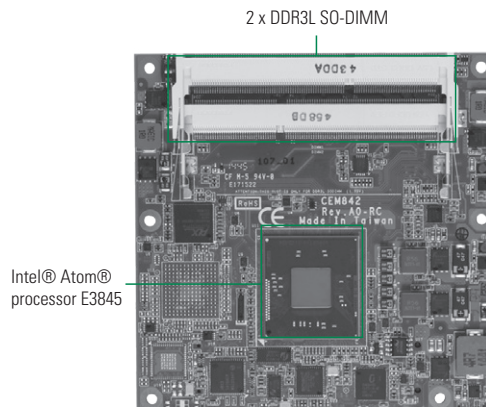


Core System

CPU	Intel® Atom® processor E3845 1.91 GHz onboard
System Memory	2 x 204-pin SO-DIMM DDR3L-1066/1333, up to 8GB
Chipset	SoC integrated
BIOS	AMI uEFI (Legacy free)
SSD	N/A
Watchdog Timer	255 levels, 1 ~ 255 sec. or min.
Expansion Interface	Max. up to 6 lanes of PCIe
Battery Lithium	N/A
Power Input	ATX: 12V/5VSB, AT: 12V
Size	95 x 95 mm
Board Thickness	2.0 mm
Temperature	-40°C ~ +85°C (-40°F ~ +185°F), operation
Operation Humidity	10% ~ 95% relative humidity, non-condensing

I/O

MIO	1 x LPC interface 1 x SPI interface
SATA	2 x SATA-300
Hardware Monitoring	Yes
Ethernet	1 port as 10/100/1000Mbps supports Wake-on-LAN, PXE Boot ROM with Intel® i210IT
Audio	HD link interface to baseboard for Codec
USB	8 x USB 2.0 1 x USB 3.0
TPM	TPM 1.2
SMBus	Yes
Digital I/O	4 channels IN & 4 channels OUT



▲ Rear view

Display

Chipset	Intel® HD graphics (Gen 7 Gfx) display engine Gfx APIs-DX11, OCL 1.2, OGL 3.0 2 independent displays
Display Interface	1 x VGA 1 x LVDS; 18/24-bit single/dual channel 1 x DDI (DP, HDMI, DVI)

Packing List

Quick installation guide, user's manual/utility CD

Ordering Information

Standard	
CEM843PVG-E3845 (P/N: E38D843100)	COM Express Type 6 compact module with Intel® Atom® E3845 1.91 GHz, DDI/VGA/LVDS, GbE LAN, USB 3.0 and TPM

Optional Accessories	
CEB94011 (P/N: E394011100)	ATX form factor Type 6 evaluation baseboard
5078D841100E	CEM841/2/3 heat spreader
5078D842200E	CEM841/2/3 heat sink without fan

Note: 5078D842200E has to be used with 5078D41100E

Block Diagram

