



**SSF\_SSH 0822**

**8" Resizing LCD, 250 nits LED backlight, 1024x324 ultra wide aspect ratio 16:5**

SSF/SSH0822 is an innovative ultra-wide, sunlight readable, LED backlight LCD display. It provides LCD panel with specific ratios for digital signage, public transportation, exhibition hall, department store, vending machine, POS and industrial applications. It is high-quality full color video with energy-efficient.

**Key Features**

- 8" resizing LCD
- Stretched display (aspect ratio of 16:5)
- Brightness of 250 nits
- Resolutions: 1024 x 324
- Low power consumption
- BL MTBF: 70,000 hours



Specifications		V1
<b>Model No.</b>	<b>SSF0822</b>	<b>SSH0822</b>
<b>Description</b>	8" Resizing LCD, 250 nits LED backlight, 1024x324	
<b>Display Area</b>	195.1 x 61.2 mm	
<b>Brightness</b>	250 cd/m <sup>2</sup>	
<b>Resolution</b>	1024 x 324	
<b>Aspect Ratio</b>	16 : 5	
<b>Contrast Ratio</b>	500:1	
<b>Pixel Pitch (mm)</b>	0.1905 x 0.189	
<b>Viewing Angle</b>	140°(H), 110°(V)	
<b>Display Colors</b>	262K	
<b>Response Time (Typical)</b>	25 ms	
<b>Sync</b>	LVDS	
<b>Power Consumption</b>	3W / 5W	
<b>Dimensions (mm)</b>	215 x 79.2 x 7.5	
<b>Weight (Net)</b>	0.17Kg /0.27kg	
<b>LED Driving Board</b>	<b>On board</b>	
<b>Control Board (Optional)</b>	<b>AD6038GM</b>	
<input type="checkbox"/> <b>AD6038GM</b>	VGA	
<input type="checkbox"/> <b>AD2662GDHMVAR</b>	VGA,DVI/HDMI/AV/S-VIDEO/YPbPr/Rs232(opton)	
<b>F / R Control Button</b>	5 Key / 4 Key	
<input type="checkbox"/> <b>4 Key</b>	Power Switch, Menu, Select (+,-),	
<input type="checkbox"/> <b>5 Key</b>	Power Switch, Menu, Select (+,-),Auto	
<b>OSD Menu</b>	Brightness, Contrast, H/V Position, Color, Phase, Clock...	
<b>Optional</b>	<input type="checkbox"/> <b>Touch Screen</b>	

Specifications are subject to change without notice.  
All brands or product names are trademarks or registered trademarks of their respective companies.

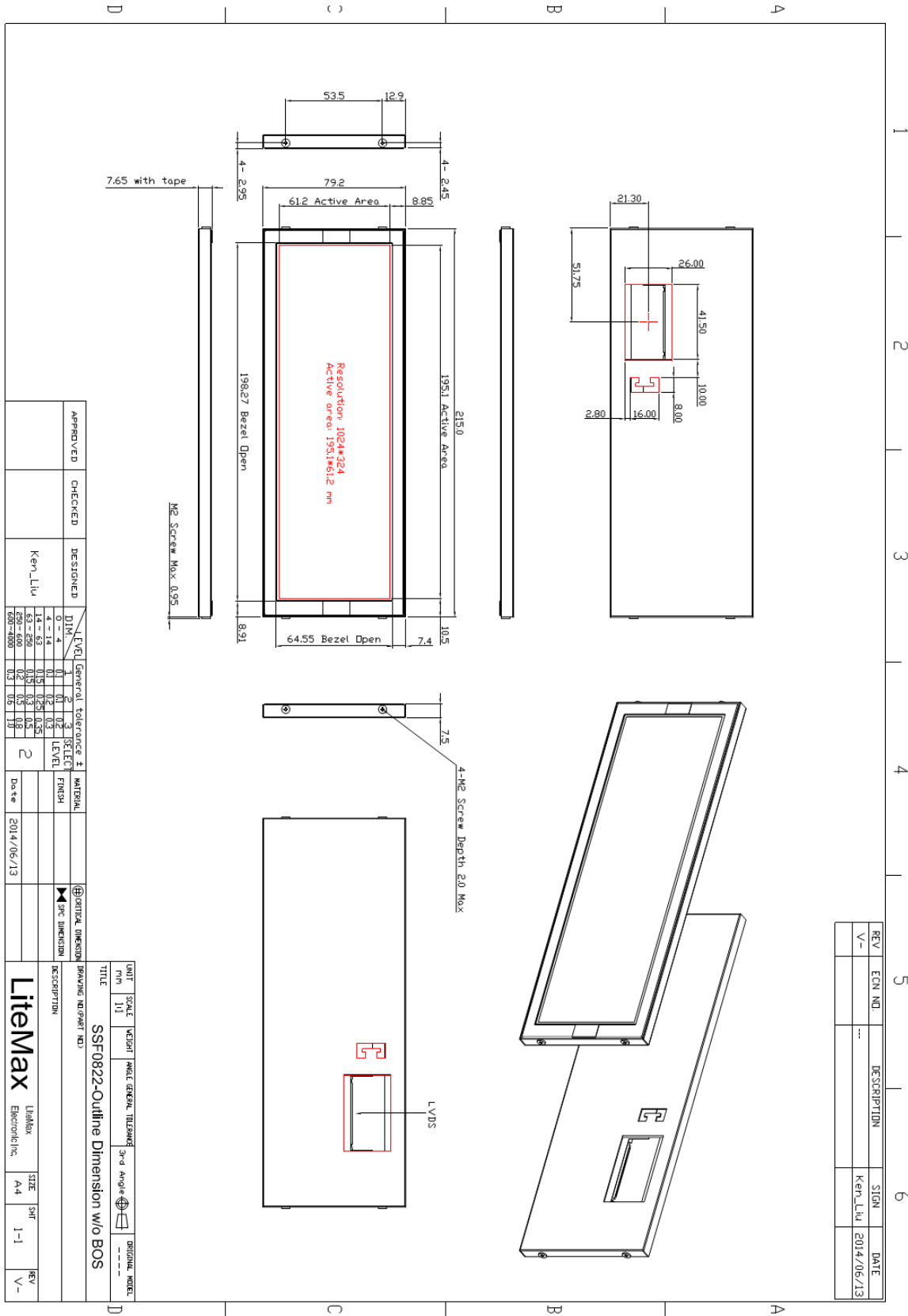
**SSF**= Panel+ LED Driving Board  
**SSH**= Panel+ LED Driving Board + Control Board



# Mechanical Drawing

## Outline Dimensions

Unit: mm



APPROVED	CHECKED	DESIGNED	DRAWN	LEVEL	General Tolerance ±	SELECT LEVEL	MATERIAL	VERTICAL DIMENSION
		Ken_Liv		0 - 4	1	0.1		▶ SPC DIMENSION
				4 - 14	2	0.2		
				14 - 50	3	0.3		
				50 - 600	4	0.5		
				600 - 1000	5	0.8		
					6	1.0		
					7	1.5		
					8	2.0		
					9	3.0		
					10	4.0		
					11	5.0		
					12	6.0		
					13	8.0		
					14	10.0		
					15	12.0		
					16	15.0		
					17	20.0		
					18	25.0		
					19	30.0		
					20	40.0		
					21	50.0		
					22	63.0		
					23	80.0		
					24	100.0		
					25	125.0		
					26	160.0		
					27	200.0		
					28	250.0		
					29	315.0		
					30	400.0		
					31	500.0		
					32	630.0		
					33	800.0		
					34	1000.0		

UNIT	SCALE	VERSION	PANEL GRADE	TOLERANCE	3rd Angle	ORIGIN	AREA
mm	1:1						
TITLE							
SSF0822-Outline Dimension w/o BOS							
DRAWING NUMBER AND							
DESCRIPTION							
Litemax							
Litho							
Electronic Inc.							
SIZE A4							
SHR 1-1							
REV V-							

REV	ECN NO.	DESCRIPTION	SIGN	DATE
V-			Ken_Liv	2014/06/13



### Ordering Information

Model Name	Description
SSF0822-ENN-A01	8",250nits,1024*324.V01(10 in 1)
SSH0822-ENN-I01	8",250nits,1024*324,AD6038GM.V1(10 in 1)
SSH0822-ENN-G01	8",250nits,1024*324,AD2662GHM.DC 12V,V01(10 in 1)

### Optional Accessories

Part Number	Description
840612051210	ADAPTER,AC/DC,12V/5.4A,65W,Atech OEM A065112-TDx,4P SLIDING CAP,P
810618301010	CABLE.POWER.AC.1830mm USA type
810618301090	CABLE,POWER,AC,1830mm Europe type
810618301050	CABLE.POWER.AC.1830mm UK type
810618301170	CABLE.POWER,AC,1830mm Australia type
810618301031	CABLE.POWER.AC.1830mm Japan type