



Industrial Solutions Partner!

**SSD1916-A**

**19.1" Resizing LCD Display, Brightness is 1200 nits, LED backlight, 1920x388 ultra wide aspect ratio 16:3.2**

SSD 1916-A is an innovative ultra-wide, LED backlight LCD module. It provides LCD panel with specific ratios for digital signage, public transportation, exhibition hall, department store, and vending machine applications.

**Key Features**

- Resizing LCD
- Ultra Wide Screen (16 : 3.2)
- LED Backlight
- High Brightness 1200nits
- Low Power Consumption
- Wide Viewing Angle
- High Uniformity
- Wide Dimming



**Specifications**

V1

<b>Model No.</b>	<b>SSD1916-A</b>
<b>Description</b>	19.1" Resizing LCD Display, 1200nits, LED backlight, 1920x388
<b>Display Area</b>	476.6x 96.3 mm
<b>Brightness</b>	1200nits
<b>Resolution</b>	1920 x 388
<b>Aspect Ratio</b>	16 : 3.2
<b>Contrast Ratio</b>	3000:1
<b>Pixel Pitch (mm)</b>	0.248 x 0.248
<b>Viewing Angle</b>	178°(H), 178°(V)
<b>Display Colors</b>	16.7M
<b>Response Time (Typical)</b>	25 ms
<b>Power Consumption</b>	22.9W
<b>Dimensions (mm)</b>	508 x 132 x 47 mm
<b>Weight (Net)</b>	2.39 kg
<b>LED Driving Board</b>	LID19A
<b>Control Board (Optional)</b>	<input type="checkbox"/> AD2662GD <input type="checkbox"/> AD2662GDHMVAR
<input type="checkbox"/> AD2662GD	VGA+DVI (Optional S-Video/ Component / Audio)
<input type="checkbox"/> AD2662GDHMVAR	VGA + DVI + HDMI (Optional AV/ S-Video / Component / Audio)
<b>F / R Control Button</b>	<input type="checkbox"/> 5 Key <input type="checkbox"/> 4 Key
<input type="checkbox"/> 5 Key	Power Switch, Menu, Select (+,-), Auto
<input type="checkbox"/> 4 Key	Power Switch, Menu, Select (+,-),
<b>OSD Menu</b>	Brightness, Contrast, H/V Position, Color, Phase, Clock...
<b>Optional</b>	<input type="checkbox"/> AOT <input type="checkbox"/> Touch Screen

Specifications are subject to change without notice.

All brands or product names are trademarks or registered trademarks of their respective companies.

**SSD** = Panel+ LED Driving Board + Control Board

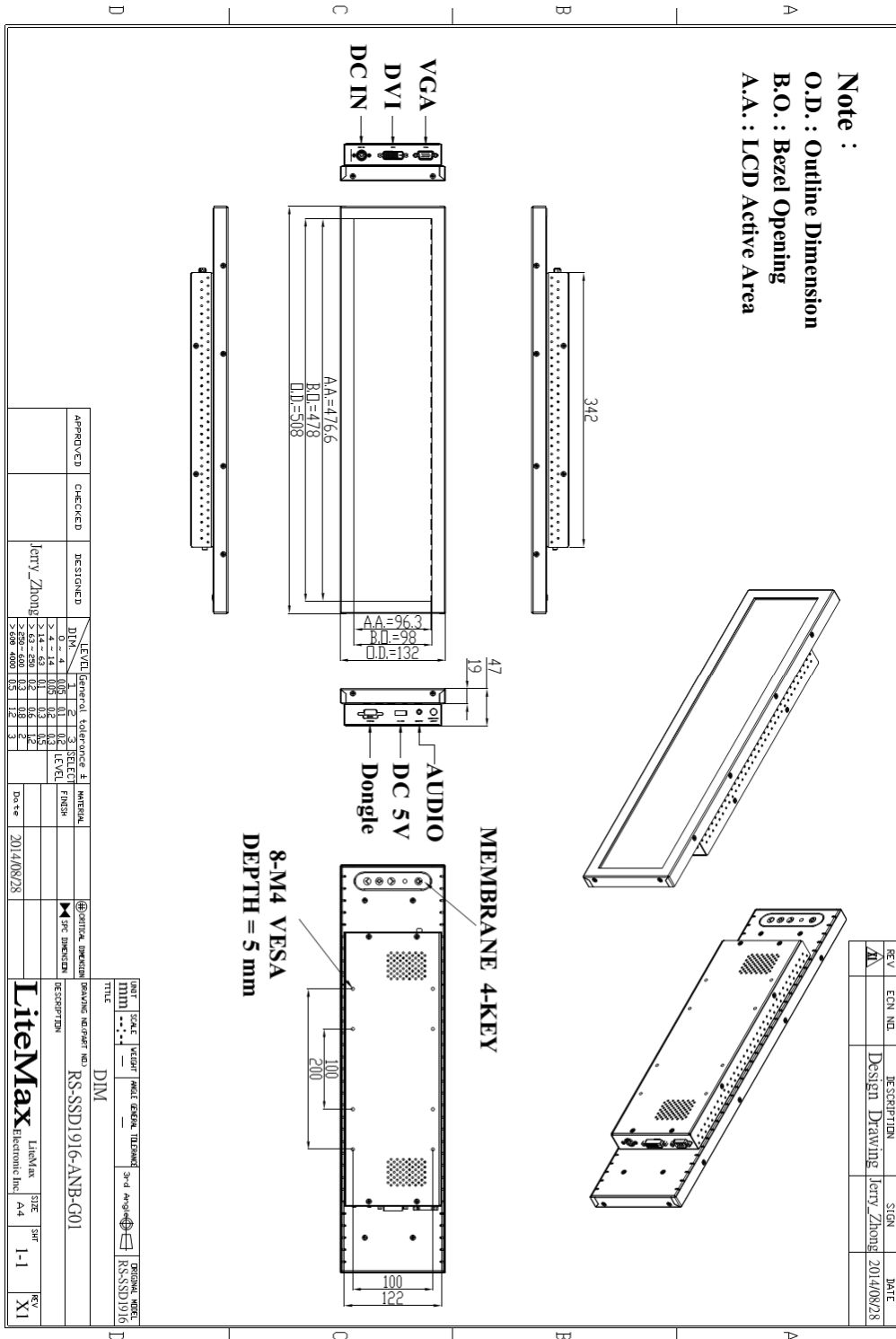


Industrial Solutions Partner!

**Mechanical Drawing**

**Panel Outline Dimensions**

Unit: mm





Industrial Solutions Partner!

**Ordering Information**

Part Number	Description
SSD1916-ANB-G01	19.1",1200nits,1920*388,LID19A.AD2662GDHMA,HDMI+USB board.Spesker*2,DC 12V,V01

**Optional Accessories**

Part Number	Description
840612051210	ADAPTER,AC/DC,12V/5.4A,65W,Atech OEM A065112-TDx,4P SLIDING CAP,P
810618301010	CABLE.POWER.AC.1830mm USA type
810618301090	CABLE.POWER.AC,1830mm Europe type
810618301050	CABLE.POWER.AC.1830mm UK type
810618301170	CABLE.POWER,AC,1830mm Australia type
810618301030	CABLE.POWER.AC.1830mm Japan type

## Assured Systems

Assured Systems is a leading technology company with over 1,500 regular clients in 80 countries, deploying over 85,000 systems to a diverse customer base in 12 years of business. We offer high-quality and innovative rugged computing, display, networking and data collection solutions to the embedded, industrial, and digital-out-of-home market sectors.

### US

[sales@assured-systems.com](mailto:sales@assured-systems.com)

Sales: +1 347 719 4508  
Support: +1 347 719 4508

1309 Coffeen Ave  
Ste 1200  
Sheridan  
WY 82801  
USA

### EMEA

[sales@assured-systems.com](mailto:sales@assured-systems.com)

Sales: +44 (0)1785 879 050  
Support: +44 (0)1785 879 050

Unit A5 Douglas Park  
Stone Business Park  
Stone  
ST15 0YJ  
United Kingdom

VAT Number: 120 9546 28  
Business Registration Number: 07699660