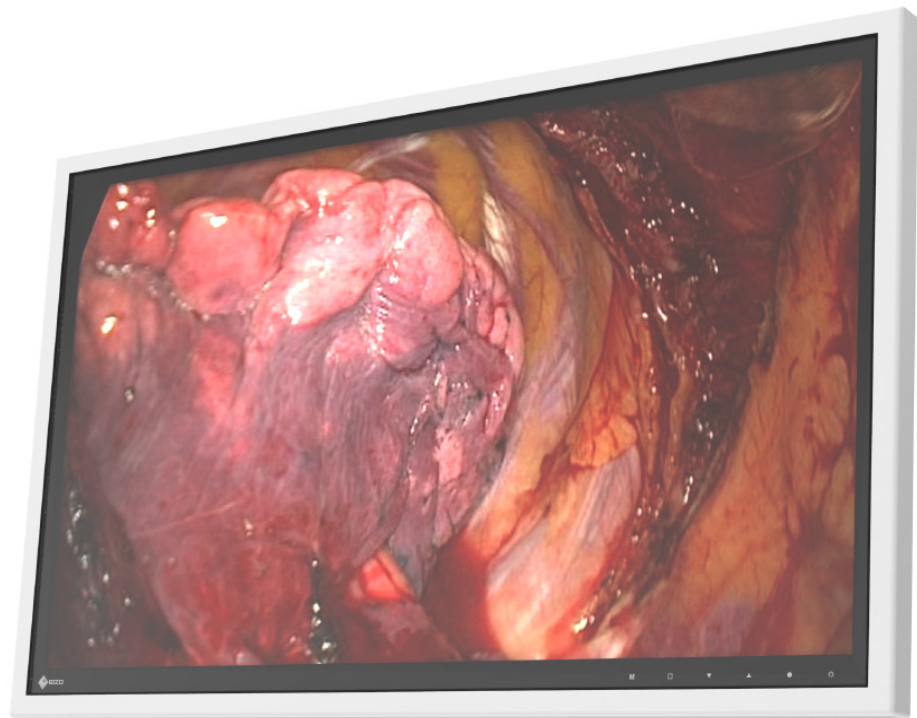


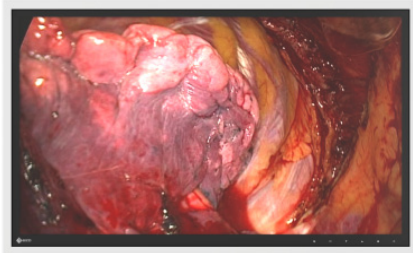


Surgical Monitor
RadiForce[®] EX270W



This Full HD widescreen monitor is ideally suited for viewing images in surgical environments. With its modular design, the EX270W is streamlined as a future-safe platform for evolving environments and further integration into a wider system.

- 27-inch LCD module with 1080p (Full HD) resolution (1920 x 1080 pixels).
- Powerful LED backlight with over 500 cd/m² luminance for an optimal presentation of critical images.
- 5 factory calibrated look-up tables for quick and easy adaptation to diverse application and viewing environments.
- Modular concept for targeted integration into current and future systems.
- Sleek, encapsulated design with laminated safety glass and an unsurpassed IP rating ideally suited to the OR environment.



RadiForce® EX270W

Exceptional High-Brightness and High-Definition

With a native resolution of 1920 x 1080 and a typical brightness well in excess of 500 cd/m², the monitor can display original, 1080p (Full HD) images without blurring or distortion irrespective of the local ambient lighting conditions.

Quick and Easy Installation

With 5 factory calibrated look-up tables and integrated mirroring functions, the monitor can be quickly and easily adapted to the local viewing conditions and preferences of the surgeon.

Diagnostic Precision with Factory Adjustment

To ensure the most accurate and consistent images possible, EIZO carefully measures and sets every tone on the production line to offer image quality tailored specifically to medical needs like gamma 2.2 or DICOM Part 14.

Quick Brightness Stabilization for Instant Viewing

EIZO's fully automated stability function makes use of an internal backlight sensor to quickly stabilize the brightness level at startup and to compensate for fluctuations caused by variations in ambient temperature and the passage of time.

Laminated Safety Glass for Easy Cleaning

The anti-reflective laminated safety glass ensures excellent image quality while protecting the monitor from scratch damage or liquid ingress during surgery or when cleaning and disinfecting the monitor.

Sleek, Encapsulated Housing

With a depth of roughly 4 cm, the sleek, curved housing offers a minimized footprint and no connection clutter to ease installation and save precious space in the operating room environment.

Modular Design

EIZO offers a growing range of input modules to allow future-safe connections from legacy or state-of-the-art systems to a streamlined monitor optimized for the high performance needs of the operating room.

Comfortably View from Any Angle

Wide viewing angles allow the monitor to be viewed from the side with minimal color shift, thus offering a quality image to multiple persons watching from different perspectives simultaneously.

Fanless Silent Design

Engineered to dissipate heat without a fan, the EX270W generates no distracting noises and does not circulate dust and germs or disturb the controlled laminar airflow within the operating room.

Arm Mountable VESA Compliance

The monitor can be easily mounted onto new or existing VESA-compliant suspension units and flexibly positioned with the forward spacer and positioning rail mount accessories.

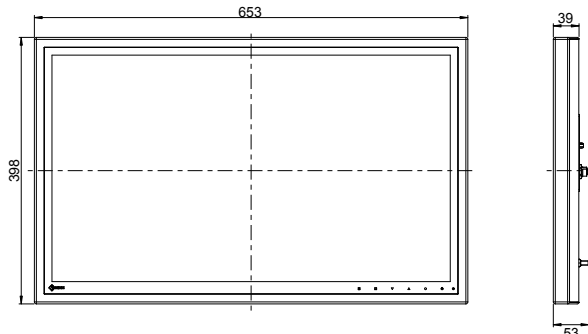
Customer Assurance with Medical Standards

RadiForce monitors meet the strictest medical, safety, and EMC emission standards.

Specifications

Model Variations	EX270W: with preinstalled TRM0000-DVI input module
Cabinet Color	White
Panel Type	TFT Color LCD Panel (dual domain IPS)
Backlight	White LED
Panel Size	68.6 cm / 27" (686 mm diagonal)
Native Resolution	1920 x 1080 (16:9 aspect ratio)
Viewable Image Size (H x V)	597.8 x 336.3 mm
Pixel Pitch	0.3114 x 0.3114 mm
Display Colors	8-bit colors: 16.77 million colors
Viewing Angles (H, V, typical)	178°, 178°
Brightness (minimum)	500 cd/m ²
Brightness (typical)	>600 cd/m ²
Contrast Ratio (typical)	1000:1
Response Time (typical)	8 ms (gray to gray)
Input Terminals	DVI-D x 1 (TRM0000-DVI) RJ45 x 1 (TRM0000-TDL) M12 x 1 (TRM0000-M12)
Supported Input Signals	DVI single link, 50 - 64 Hz
Power Requirements	AC adapter input: 100 - 240 V: 50 - 60 Hz Monitor input (M12): 24 VDC, 2.5 A
Maximum Power Consumption	55 W
Power Save Mode	5.2 W (lamp off mode), 20.6 W (lamp dimmed mode)
Power Management	DVI DMPM
Sensor	Backlight and temperature sensor
OSD Languages	English
Net Weight	10 kg
Degree of Protection	Front surface: IP65 Rear housing: - IP42 (TRM0000-DVI) - IP41 (TRM0000-TDL) - IP65 (TRM0000-M12) - IP55 (rear housing frame interface)
Hole Spacing (VESA Standard)	100 x 100 mm (added flexibly with forward spacer and positioning rail adapters)
Certifications and Standards (Please contact the EIZO group company or distributor in your country for the latest information)	CE (Medical Device Directive), EN60601-1, UL60601-1, CAN/CSA-C22.2 No. 60601-1-08, IEC60601-1, FCC-B, RoHS, WEEE
Supplied Accessories	AC power supply to medical standards, power cables (en, us, jp), signal cable (DVI-D single link), TRM0000-DVI (DVI input module preinstalled in factory), forward spacer, positioning rail, mounting screws, Utility Disk (instructions for use)
Optional Accessories	TRM0000-TDL input module, TRM0000-M12 input module, LMM0804 large monitor manager, TDL3600-SL DVI transmission link

Dimensions (unit: mm)



EIZO GmbH

Siemensallee 84, 76187 Karlsruhe, Germany
Phone +49 721 20321 0, Fax +49 721 20321 474
www.eizo.com

All product names are trademarks or registered trademarks of their respective companies. EIZO and RadiForce are registered trademarks of EIZO Corporation. Specifications are subject to change without notice.

Copyright © 2014 EIZO GmbH. All rights reserved. (1409)

Assured Systems

Assured Systems is a leading technology company with over 1,500 regular clients in 80 countries, deploying over 85,000 systems to a diverse customer base in 12 years of business. We offer high-quality and innovative rugged computing, display, networking and data collection solutions to the embedded, industrial, and digital-out-of-home market sectors.

US

sales@assured-systems.com

Sales: +1 347 719 4508
Support: +1 347 719 4508

1309 Coffeen Ave
Ste 1200
Sheridan
WY 82801
USA

EMEA

sales@assured-systems.com

Sales: +44 (0)1785 879 050
Support: +44 (0)1785 879 050

Unit A5 Douglas Park
Stone Business Park
Stone
ST15 0YJ
United Kingdom

VAT Number: 120 9546 28
Business Registration Number: 07699660