



Industrial Solutions Partner!

**SSF/SSH1505 V2**

**15" Resizing LCD, 1000 nits LED backlight, 1280x242 ultra wide aspect ratio 16:3**

SSF/SSH1505 V2 is an innovative ultra-wide, sunlight readable, LED backlight LCD display. It provides LCD panel with specific ratios for digital signage, public transportation, exhibition hall, department store, vending machine and industrial applications. Incorporating with A.D. control board and backlight design, it is high brightness and sunlight readable panel, can display high-quality video with energy-efficient.

**Key Features**

- Resizing LCD
- Ultra Wide Screen (16 : 3)
- Sunlight Readable
- LED Backlight
- High Brightness 1000 nits
- Low Power Consumption
- High Uniformity (90%)
- Wide Dimming
- Life Expectancy (70,000hrs)
- Slim Bezel



**Specifications**

V1

<b>Model No.</b>	<b>SSF/SSH 1505 V2</b>
<b>Description</b>	15.0" Resizing LCD, 1000 nits LED backlight, 1280x242
<b>Display Area</b>	376.3 x 71.2 mm
<b>Brightness</b>	1,000 cd/m <sup>2</sup>
<b>Resolution</b>	1280 x 242
<b>Aspect Ratio</b>	16 : 3
<b>Contrast Ratio</b>	1000:1
<b>Pixel Pitch (mm)</b>	0.294 x 0.294
<b>Viewing Angle</b>	+80°~-80°(H), +85°~-85°(V)
<b>Display Colors</b>	16.7M
<b>Response Time (Typical)</b>	5 ms
<b>Sync</b>	LVDS
<b>Power Consumption</b>	9 W / 12W
<b>Dimensions (mm)</b>	396 x 94.2 x 12.2
<b>Weight (Net)</b>	0.83 Kg
<b>LED Driving Board</b>	<b>LID15A</b>
<b>Control Board (Optional)</b>	<b>AD2662GDMR</b>
<input type="checkbox"/> AD2662GDMR	VGA +DVI +RS232
<input type="checkbox"/> Others	
<b>F / R Control Button</b>	<input type="checkbox"/> 5 Key <input type="checkbox"/> 4 Key
<input type="checkbox"/> 5 Key	Power Switch, Menu, Select (+,-), Auto
<input type="checkbox"/> 4 Key	Power Switch, Menu, Select (+,-),
<b>OSD Menu</b>	Brightness, Contrast, H/V Position, Color, Phase, Clock...
<b>Optional</b>	<input type="checkbox"/> AOT <input type="checkbox"/> Touch Screen

Specifications are subject to change without notice.  
All brands or product names are trademarks or registered trademarks of their respective companies.

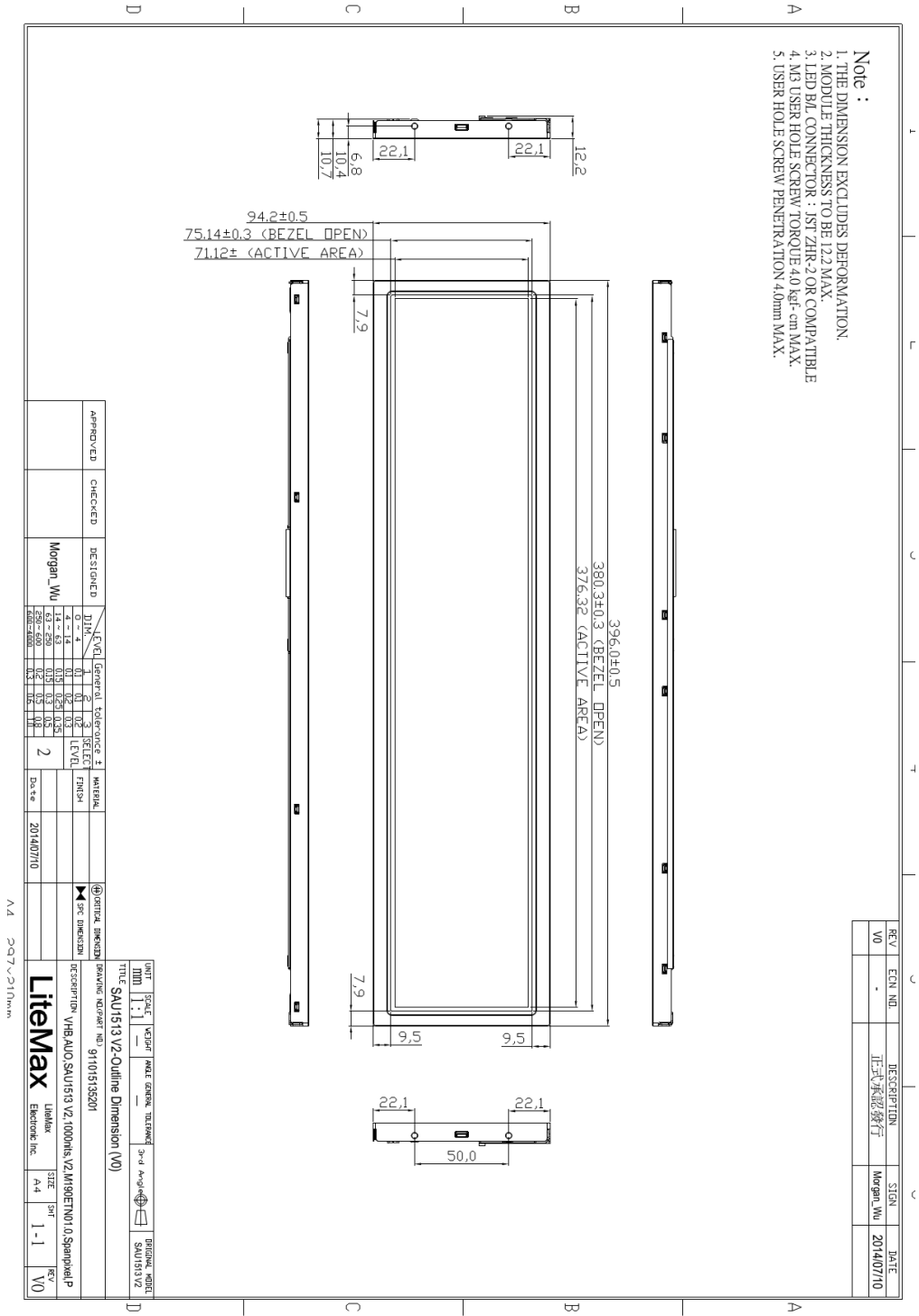
**SSF**= Panel+ LED Driving Board  
**SSH**= Panel+ LED Driving Board + Control Board



**Mechanical Drawing**

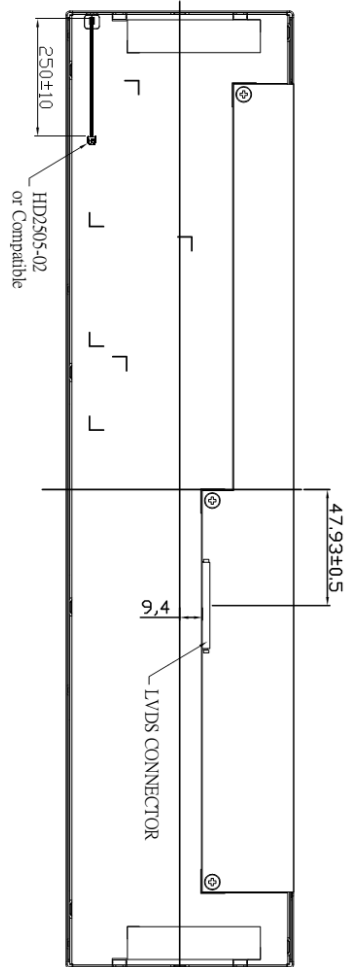
**Outline Dimensions**

Unit: mm





- Note :**
1. THE DIMENSION EXCLUDES DEFORMATION.
  2. MODULE THICKNESS TO BE 12.2 MAX.
  3. LED B/L CONNECTOR : 1ST ZHR-2 OR COMPATIBLE
  4. M3 USER HOLE SCREW TORQUE 4.0 kgf·cm MAX.
  5. USER HOLE SCREW PENETRATION 4.0mm MAX.



REV	EQV. NO.	DESCRIPTION	SIGN	DATE
V0	-	正式承認發行	Morgan_Wu	2014/07/10

APPROVED	CHECKED	DESIGNED	LEVEL	General	Tolerance	MATERIAL
		Morgan_Wu	DIM. 1	1	±0.1	
			2	2	±0.2	
			3	3	±0.3	
			4 ~ 14	0.15	0.25	
			15 ~ 25	0.2	0.3	
			26 ~ 35	0.25	0.35	
			36 ~ 45	0.3	0.4	
			46 ~ 60	0.4	0.5	
			61 ~ 80	0.5	0.6	
			81 ~ 100	0.6	0.8	
			101 ~ 120	0.8	1.0	
			121 ~ 150	1.0	1.2	
			151 ~ 200	1.2	1.5	
			201 ~ 250	1.5	2.0	
			251 ~ 300	2.0	2.5	
			301 ~ 400	2.5	3.0	
			401 ~ 500	3.0	4.0	
			501 ~ 600	4.0	5.0	
			601 ~ 800	5.0	6.0	
			801 ~ 1000	6.0	8.0	

OPTIONAL DIMENSION	SPC DIMENSION	DATE	2014/07/10
<b>Litemax</b> Litmax Electronic Inc. SIZE: A4 SHR: 1-1 REV: V0			



Industrial Solutions Partner!

### Ordering Information

Model Name	Description
SSF1505-ENN-A11	15",1000ints,1280*242,LID15.AD2662GDMR,O/B,DC 12V,V02
SSH1505-ENN-G11	15",1000nits,1280*242,LID15.AD2662GDM,DC12V,V02
SSH1505-ENN-G12	15",1000nits,1280*242,LID15.AD2662GHM,DC12V,V02

### Optional Accessories

Part Number	Description
<b>840612051210</b>	ADAPTER,AC/DC,12V/5.4A,65W,Atech OEM A065112-TDx.4P SLIDING CAP,P
<b>810618301010 (Optional)</b>	CABLE.POWER.AC.1830mm.(US Type).3PIN PLUG TO SOCKET.SVT(SPT-2 )18AWG 3C BLACK,P.
<b>810618301090 (Optional)</b>	CABLE,POWER,AC,1830mm.(EU Type) 3PIN PLUG TO.SOCKET,H05VV-F 3G.0.75MMSQ BLACK,P
<b>810618301050 (Optional)</b>	CABLE,POWER,AC,1830mm.UK(FUSE) 3PIN PLUG TO.SOCKET,H05VV-F 3C(3G) 0.75MMSQ BLACK,P
<b>810618301170 (Optional)</b>	CABLE.POWER,AC,1830mm(AU Type)3PIN PLUG TO 2P SOCKET.LTSA 0.75MMSQ BLACK,P
<b>810618301030 (Optional)</b>	CABLE.POWER.AC.1830mm.(JP Type).2PIN PLUG Y TERMINAL TO. SOCKET.VCTF 3C 0.75MMSQ BLACK,P

## Assured Systems

Assured Systems is a leading technology company with over 1,500 regular clients in 80 countries, deploying over 85,000 systems to a diverse customer base in 12 years of business. We offer high-quality and innovative rugged computing, display, networking and data collection solutions to the embedded, industrial, and digital-out-of-home market sectors.

### US

[sales@assured-systems.com](mailto:sales@assured-systems.com)

Sales: +1 347 719 4508  
Support: +1 347 719 4508

1309 Coffeen Ave  
Ste 1200  
Sheridan  
WY 82801  
USA

### EMEA

[sales@assured-systems.com](mailto:sales@assured-systems.com)

Sales: +44 (0)1785 879 050  
Support: +44 (0)1785 879 050

Unit A5 Douglas Park  
Stone Business Park  
Stone  
ST15 0YJ  
United Kingdom

VAT Number: 120 9546 28  
Business Registration Number: 07699660