



Industrial Solutions Partner!

SSF_SSH 0822

8" Resizing LCD, 250 nits LED backlight, 1024x324 ultra wide aspect ratio 16:5

SSF/SSH0822 is an innovative ultra-wide, sunlight readable, LED backlight LCD display. It provides LCD panel with specific ratios for digital signage, public transportation, exhibition hall, department store, vending machine, POS and industrial applications. It is high-quality full color video with energy-efficient.

Key Features

- 8" resizing LCD
- Stretched display (aspect ratio of 16:5)
- Brightness of 250 nits
- Resolutions: 1024 x 324
- Low power consumption
- BL MTBF: 70,000 hours



Specifications

V1

Model No.	SSF0822	SSH0822
Description	8" Resizing LCD, 250 nits LED backlight, 1024x324	
Display Area	195.1 x 61.2 mm	
Brightness	250 cd/m ²	
Resolution	1024 x 324	
Aspect Ratio	16 : 5	
Contrast Ratio	500:1	
Pixel Pitch (mm)	0.1905 x 0.189	
Viewing Angle	140°(H), 110°(V)	
Display Colors	262K	
Response Time (Typical)	25 ms	
Sync	LVDS	
Power Consumption	3W / 5W	
Dimensions (mm)	215 x 79.2 x 7.5	
Weight (Net)	0.17Kg /0.27kg	
LED Driving Board	On board	
Control Board (Optional)	AD6038GM	
<input type="checkbox"/> AD6038GM	VGA	
<input type="checkbox"/> AD2662GDHVAR	VGA,DVI/HDMI/AV/S-VIDEO/YPbPr/Rs232(option)	
F / R Control Button	5 Key / 4 Key	
<input type="checkbox"/> 4 Key	Power Switch, Menu, Select (+,-),	
<input type="checkbox"/> 5 Key	Power Switch, Menu, Select (+,-),Auto	
OSD Menu	Brightness, Contrast, H/V Position, Color, Phase, Clock...	
Optional	<input type="checkbox"/> Touch Screen	

Specifications are subject to change without notice.

All brands or product names are trademarks or registered trademarks of their respective companies.

SSF= Panel+ LED Driving Board

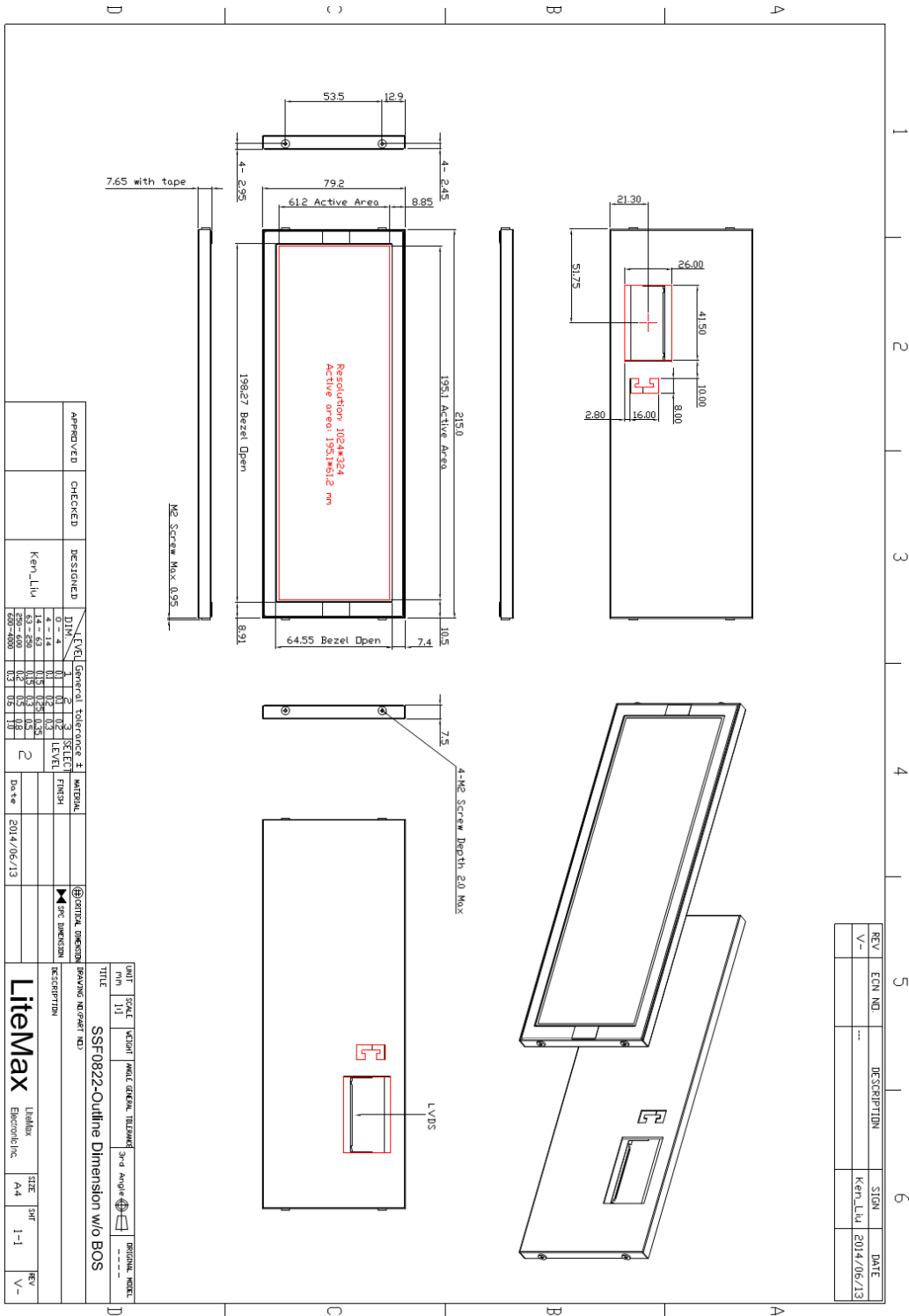
SSH= Panel+ LED Driving Board + Control Board



Mechanical Drawing

Outline Dimensions

Unit: mm





Industrial Solutions Partner!

Ordering Information

Model Name	Description
SSF0822-ENN-A01	8",250nits,1024*324.V01(10 in 1)
SSH0822-ENN-I01	8",250nits,1024*324,AD6038GM.V1(10 in 1)
SSH0822-ENN-G01	8",250nits,1024*324,AD2662GHM.DC 12V,V01(10 in 1)

Optional Accessories

Part Number	Description
840612051210	ADAPTER,AC/DC,12V/5.4A,65W,Atech OEM A065112-TDx,4P SLIDING CAP,P
810618301010	CABLE.POWER.AC.1830mm USA type
810618301090	CABLE,POWER,AC,1830mm Europe type
810618301050	CABLE.POWER.AC.1830mm UK type
810618301170	CABLE.POWER,AC,1830mm Australia type
810618301031	CABLE.POWER.AC.1830mm Japan type

Assured Systems

Assured Systems is a leading technology company with over 1,500 regular clients in 80 countries, deploying over 85,000 systems to a diverse customer base in 12 years of business. We offer high-quality and innovative rugged computing, display, networking and data collection solutions to the embedded, industrial, and digital-out-of-home market sectors.

US

sales@assured-systems.com

Sales: +1 347 719 4508
Support: +1 347 719 4508

1309 Coffeen Ave
Ste 1200
Sheridan
WY 82801
USA

EMEA

sales@assured-systems.com

Sales: +44 (0)1785 879 050
Support: +44 (0)1785 879 050

Unit A5 Douglas Park
Stone Business Park
Stone
ST15 0YJ
United Kingdom

VAT Number: 120 9546 28
Business Registration Number: 07699660