

# IWF 3320X

**Industrial Wi-Fi Access Point**  
Dual RF, Dual band, 802.11 a/b/g/n



## Main Features

- Concurrent IEEE802.11 a/b/g/n for transmission rate up to 2x 300Mbps
- Redundant power input supporting 802.3af PoE and 9-36VDC Input
- Industrial grade conformal coating for harsh environment
- Rugged Die-casting housing with -30 to + 80°C wide-temperature
- The layer-2 Wireless Firewall gives protection from wireless attacks
- Press-n-Connect to enable auto WDS/mesh network
- Comprehensive WLAN security encryption with WEP, WPA/WPA2, IEEE 802.1X or PSK
- Multiple-SSID Virtual APs for grouping policy management
- Tunnel-based AP management by backend AP controller

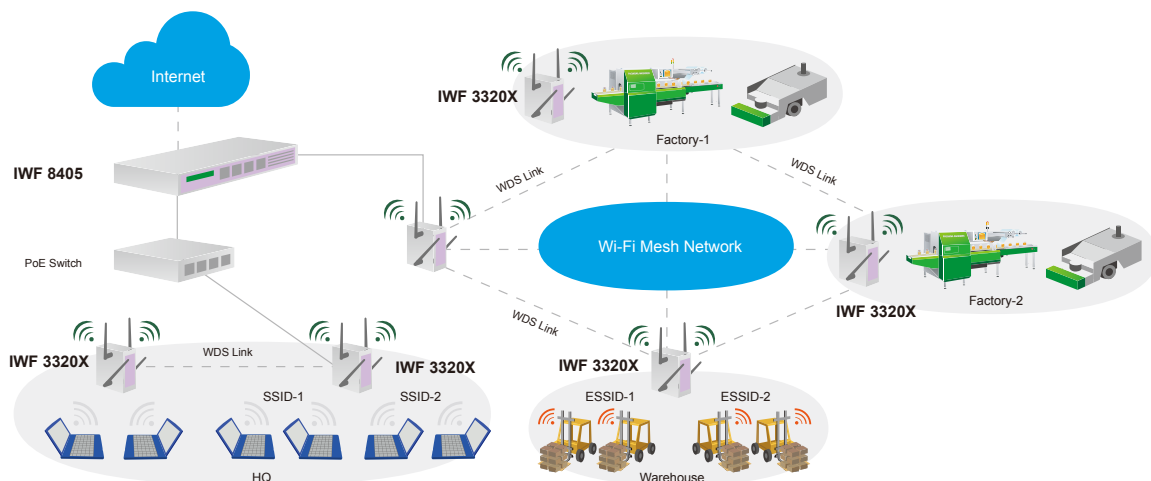
## Product Overview

Design for industrial application in critical environment like factory, automation field, IWF 3320X Access Point embedded with 802.11a/b/g/n up to 300Mbps concurrently dual-band , dual RF solution inside an industrial grade metal chassis that support operating at -30~+80°C wide temperature.

To meet the expectation of high reliable communication in diversify application, IWF 3320X series provides robust redundant mechanism to ensure the trusted operation. The dual power input of both PoE 802.3af & wide voltage 9~36VDC ensures power connected all the time. The Dual RF can automatically backup the data transmission each other while any RF disconnect accidentally that also can establish mesh network. Dual band radio of 2.4GHz and 5GHz can be separated into different path for application or management need, for instance, the 5GHz radio can be used for central backend communication while 2.4GHz radio is used for front end device communication.

The fast roaming capability within 20ms supports the on-the-move wireless communication without any concern in connectivity

Managed by backend AP controller, IWF 3320X supports CAPWAP thru private tunnel for security & users behavior control cross subnets. This will help IT manager in HQ easily maintain the access points located in local and/or remote sites, ex: oversea factory, branch office for unified management, and flexible grouping control.





[www.nexcom.com](http://www.nexcom.com)

## Specifications

### Wireless Radio

- Wireless Interface: Dual RF IEEE 802.11 a/b/g/n
- Frequency band: Dual 2.4 GHz and 5 GHz
- Wireless architecture:
  - (1) AP mode
  - (2) WDS mode (Repeater / Bridge)
  - (3) Mesh Network
- Channels:
  - (1) USA (Channel 1~11)
  - (2) Europe (Channel 1~13)
  - (3) Japan (Channel 1~13)
- Data rate with auto fallback:
  - (1) 802.11a: 6 ~ 54 Mbps
  - (2) 802.11b: 1 ~ 11 Mbps
  - (3) 802.11g: 6 ~ 54 Mbps
  - (4) 802.11n: 6.5 ~ 300Mbps
- Transmit Power:
  - (1) 802.11a: Up to 22dBm
  - (2) 802.11b: Up to 22dBm
  - (3) 802.11g: Up to 24dBm
  - (4) 802.11an: Up to 22dBm
  - (5) 802.11gn: Up to 22dBm
- Receiver Sensitivity:
  - (1) 802.11a: -95dBm@6Mbps
  - (2) 802.11b: -95dBm@1Mbps
  - (3) 802.11g: -95dBm@6Mbps
  - (4) 802.11n: 802.11an HT20: -95dBm@MCS0
  - (5) 802.11an HT40: -91dBm@MCS0
  - (6) 802.11gn HT20: -95dBm@MCS0
  - (7) 802.11gn HT20: -90dBm@MCS0

### Protocol & QoS support

- IGMP Snooping
- Proxy ARP
- SNMP v1/v2c
- CAWAP
- DHCP client
- SYSLOG client
- RADIUS client
- IPv6
- DiffServ/TOS
- IEEE 802.1p/COS
- IEEE 802.1Q Tag VLAN priority control
- IEEE 802.11e WMM
- IEEE 802.1D Spanning Tree Protocol

### Handover & Roaming

- IEEE 802.11i pre-auth (PMKSA cache)
- IEEE 802.11f IAPP fast roaming with adjacent AP

### Security

- WEP (64/128/152 bits)
- EAP-TLS + Dynamic WEP
- EAP-TTLS + Dynamic WEP
- PEAP/MS-PEAP + Dynamic WEP

- WPA (PSK + TKIP)
- WPA (802.1X certification + TKIP)
- 802.11i WPA2 (PSK + CCMP/AES)
- 802.11i WPA2 (802.1X certification + CCMP/AES)
- Hidden ESSID support
- MAC Address filtering (MAC ACL)
- MAC authentication with RADIUS servers

### System Administration

- Web-based administration
- Provides Event Log
- SYSLOG information support
- Statistics
- Configuration backup and restore
- One-button-click to restore factory default setting
- Firmware upgrade
- Capable of performing RADIUS Accounting and Accounting Update
- Press-n-Connect to enable auto WDS/mesh network
- Ethernet LAN Port Mapping (with a NEXCOM controller)

### Wireless Signal Management

- Number of ESSIDs (Virtual APs): 16
- Number of associated clients: 256

### Hardware Specifications

- Antenna: 4 x omni-directional 5dBi enclosed
- Uplink Port: 1 x GbE LAN with IEEE 802.3af PoE
- LAN Port: 2 x GbE LAN
- Push buttons: 1 x Reset, 2 x WES (Press-n-Connect)
- Console Port: 1 x DB9M
- LED Indicators: 1 x Power, 1 x Status, 2 x WLAN, 2 x WES
- Power Source: 9~36 Vdc & PoE
- IP50 Dust proof metal case
- Industrial grade conformal coating for anti-erosion and anti-moisture
- Form factor: Industrial DIN Rail
- Dimensions: 58.8 W x 139.6 D x 167 H (mm)w/o antennas
- Weight: 3.81 lbs (1.73kg)

### Environment Protection

- Operation Temperature: -30 ~ + 80°C (-22~158°F)
- Storage Temperature: -40 ~ + 85°C (-40~185°F)
- Operation Humidity: 0% ~ 95% (Non-condensing)
- Vibration: Random 0.3g

### Certifications

- FCC, CE
- RoHS compliant

### Package Contents

- NEXCOM IWF 3320X x 1
- CD-ROM (User's Manual and QIG) x 1
- Detachable Dual-Band Antenna x 4 5dBi
- Ethernet Cable x 1

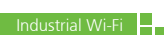
\* Specifications subject to change without notice

## Ordering Information

- IWF 3320X-US (P/N: 10T00332000x0)
- IWF 3320X-EU (P/N: 10T00332001x0)
- IWF 3320X-JP (P/N: 10T00332002x0)



We reserve the right to change specifications and product descriptions at any time without prior notice.



Last update: 11/07/2012

## Assured Systems

Assured Systems is a leading technology company with over 1,500 regular clients in 80 countries, deploying over 85,000 systems to a diverse customer base in 12 years of business. We offer high-quality and innovative rugged computing, display, networking and data collection solutions to the embedded, industrial, and digital-out-of-home market sectors.

### US

[sales@assured-systems.com](mailto:sales@assured-systems.com)

Sales: +1 347 719 4508

Support: +1 347 719 4508

1309 Coffeen Ave  
Ste 1200  
Sheridan  
WY 82801  
USA

### EMEA

[sales@assured-systems.com](mailto:sales@assured-systems.com)

Sales: +44 (0)1785 879 050

Support: +44 (0)1785 879 050

Unit A5 Douglas Park  
Stone Business Park  
Stone  
ST15 0YJ  
United Kingdom

VAT Number: 120 9546 28

Business Registration Number: 07699660