

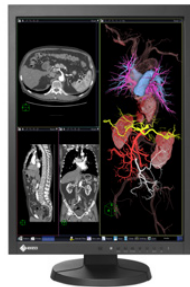


Clinical Review Monitor
RadiForce® MX215



A monitor ideal for viewing MRI and CT medical images in clinical review environments with built-in calibration sensor for maintaining optimal user settings

- Optimum viewing of medical DICOM grayscale images
- Effortless quality control with built-in calibration sensor
- Low power consumption with LED backlight
- Minimal color and contrast shift when viewed from an angle
- Clear, detailed image reproduction with high contrast ratio
- Steady images across the screen with brightness uniformity technology
- Quick brightness level stabilization at startup
- Multiple modes for viewing CT, MRI, and endoscope images
- Power conservation with integrated presence sensor
- Improved operability with a versatile stand
- Customer assurance with compliance with international medical, safety, and EMC emissions standards
- FDA 510(k) clearance



RadiForce® MX215

Diagnostic Precision with DICOM Part 14 Factory Adjustment

To ensure the most accurate and consistent shadings possible, EIZO carefully measures and sets every grayscale tone on the production line to produce a monitor compliant with DICOM Part 14.

Easy Calibration with Integrated Front Sensor

Integrated Front Sensor, housed within the front bezel, is conveniently enabled and visible only when calibration is being performed. This dramatically reduces the time and effort needed for quality control.

Environmentally-Friendly LED Backlight

By utilizing an energy-efficient LED as a backlight, the monitor achieves a high-brightness and low power consumption at the same time. Since the LED backlight is mercury-free, it will reduce any potential impact on the environment when it is disposed of.

Wide Viewing Angles for Multiple People Use

Thanks to the wide viewing angles and high contrast ratios of the panel, images can be viewed simultaneously by several people with the highest quality reproduction and minimal color shift.

High Contrast Ratio

The high contrast ratio of 1500:1 allows the RadiForce MX215 to provide users with the high level of image quality and detail essential for viewing medical images in clinical environments.

Steadier Image Across the Screen

The Digital Uniformity Equalizer (DUE) function provides optimum backlight luminance uniformity which is difficult to attain due to the characteristics of LCD monitors, especially with a larger screen size.

Quick Brightness Stabilization for Instant Viewing

At startup or upon wakeup, the EIZO patented drift correction function quickly stabilizes the brightness level. In addition, a sensor measures the backlight brightness and counteracts brightness fluctuations caused by ambient temperature and the passage of time.

Mode Selection for Optimum Viewing

Selectable with the front panel buttons, the CAL Switch function allows for various imaging modes of different modalities such as CR, CT, and endoscope images.

Presence Sensor for Power Savings

The presence sensor prompts the monitor to switch to power save mode when it detects the user is away from the monitor, and then resumes normal operation when the user returns.

Versatile Positioning for Improved Operability

EIZO's highly versatile stand offers tilt, swivel and a wide height adjustment range for greater comfort.

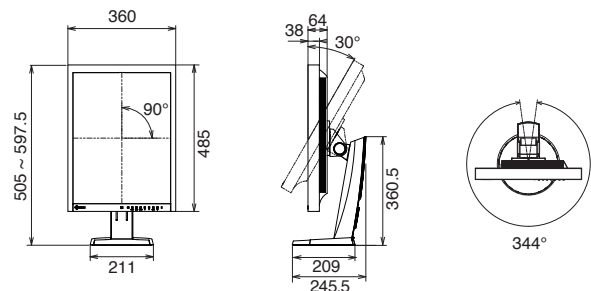
Customer Assurance with Medical Standards

EIZO monitors meet the strictest medical, safety, and EMC emission standards. The RadiForce MX215 has obtained FDA 510(k) clearance for general radiography.

Specifications

Cabinet Color	Black
Panel	Type: TFT Color LCD Panel (IPS)
	Backlight: LED
	Size: 54 cm / 21.3" (540 mm diagonal)
	Native Resolution: 1200 x 1600 (3:4 aspect ratio)
	Display Size (H x V): 324.0 x 432.0 mm
	Pixel Pitch: 0.270 x 0.270 mm
	Display Colors: 10-bit colors (DisplayPort) : 1.07 billion (maximum) colors 8-bit colors: 16.77 million from a palette of 68 billion colors
	Viewing Angles (H / V, typical): 178°, 178°
	Brightness (typical): 420 cd/m ²
	Contrast Ratio (typical): 1500:1
	Response Time (typical): 20 ms (On/Off)
Video	Input Terminals: DVI-I x 1, DisplayPort x 1
Signals	Digital Scanning Frequency (H / V): 31 - 76 kHz / 59 - 61 Hz (VGA Text: 69 - 71 Hz) Analog Scanning Frequency (H / V): 26 - 80 kHz / 49 - 76 Hz
	Sync Formats: Separate, Composite
USB	Function: 1 upstream, 2 downstream Standard: Rev. 2.0
Power	Power Requirements: AC 100 - 120 V, 200 - 240 V: 50 / 60 Hz Maximum Power Consumption: 48 W Typical Power Consumption: 19 W Power Save Mode: Less than 0.5 W Power Management: Digital: DVI DMPM, DisplayPort 1.1a Analog: VESA DPM
Sensor	Backlight Sensor, Integrated Front Sensor, Presence Sensor
Features & Functions	Brightness Stabilization: Yes Preset Modes: CAL Switch Digital Uniformity Equalizer: Yes OSD Languages: English, German, French, Italian, Japanese, Simplified Chinese, Spanish, Swedish, Traditional Chinese
Physical	Net Weight: 8.0 kg
Specifications	Net Weight (Without Stand): 5.4 kg Hole Spacing (VESA Standard): 100 x 100 mm
Certifications & Standards	CE (Medical Device Directive), EN60601-1, UL60601-1, CSA C22.2 No. 601-1, IEC60601-1, VCCI-B, FCC-B, Canadian ICES-003-B, C-tick, RoHS, China RoHS, WEEE, CCC, GOST-R (Please contact the EIZO group company or distributor in your country for the latest information.)
FDA 510(k) Clearance	Yes (for General Radiography)
Supplied Accessories	AC power cord, signal cable (DVI-D - DVI-D, DisplayPort - DisplayPort), USB cable, Utility Disk (RadiCS LE, ScreenManager Pro for Medical, user's manual)
Warranty	Five Years

Dimensions (Unit:mm)



EIZO Corporation

153 Shimokashiwano, Hakusan, Ishikawa 924-8566 Japan

Phone +81-76-277-6792 Fax +81-76-277-6793

www.eizo.com

All product names are trademarks or registered trademarks of their respective companies. EIZO, RadiForce, RadiCS and RadiNET are registered trademarks of EIZO Corporation. Specifications are subject to change without notice.

Copyright© 2013 EIZO Corporation. All rights reserved. (130804)

Assured Systems

Assured Systems is a leading technology company with over 1,500 regular clients in 80 countries, deploying over 85,000 systems to a diverse customer base in 12 years of business. We offer high-quality and innovative rugged computing, display, networking and data collection solutions to the embedded, industrial, and digital-out-of-home market sectors.

US

sales@assured-systems.com

Sales: +1 347 719 4508

Support: +1 347 719 4508

1309 Coffeen Ave
Ste 1200
Sheridan
WY 82801
USA

EMEA

sales@assured-systems.com

Sales: +44 (0)1785 879 050

Support: +44 (0)1785 879 050

Unit A5 Douglas Park
Stone Business Park
Stone
ST15 0YJ
United Kingdom

VAT Number: 120 9546 28

Business Registration Number: 07699660