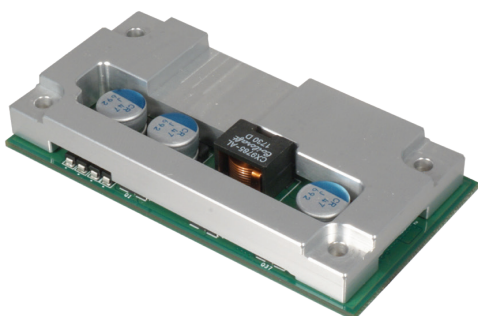


CFM-PoE06

CFM Module with PoE Control Function, Individual Port 25.5W



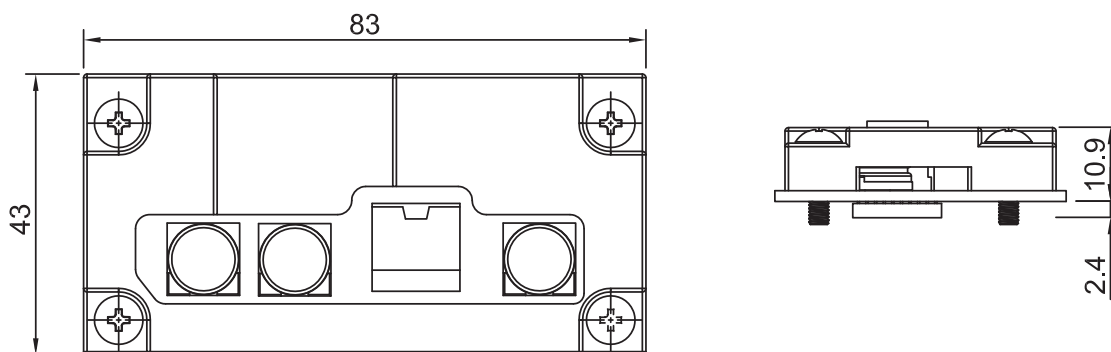
- CFM (Control Function Module) Technology
- Enable Power Over Ethernet Plus Function for CMI Module
- IEEE 802.3at Compliant
- Individual Port Support Up to 25.5W



Specifications

Interface	CFM (Control Function Module) Interface
Function	4x Power over Ethernet Plus Ports (PoE+)
Power over Ethernet Standard	IEEE 802.3at Compliant
Power Output	Individual port 25.5W
Power Boost	50 ~ 57V
Dimension (W x D x H)	83 x 43 x 10.9 mm (With Heatsink)

Dimensions



Unit: mm

Ordering Information

Available Models

CFM-PoE06-R10	CFM Module with PoE Control Function, Individual Port 25.5W
----------------------	---

Package Check List

- Control Function Module x1
- PoE Heatsink x1
- PoE Thermal Pad Pack x1
- Screw Pack x1

Compatible List

Model No.	CFM-PoE06
DI-1100	V
DI-1200	V

Assured Systems

Assured Systems is a leading technology company with over 1,500 regular clients in 80 countries, deploying over 85,000 systems to a diverse customer base in 12 years of business. We offer high-quality and innovative rugged computing, display, networking and data collection solutions to the embedded, industrial, and digital-out-of-home market sectors.

US

sales@assured-systems.com

Sales: +1 347 719 4508

Support: +1 347 719 4508

1309 Coffeen Ave
Ste 1200
Sheridan
WY 82801
USA

EMEA

sales@assured-systems.com

Sales: +44 (0)1785 879 050

Support: +44 (0)1785 879 050

Unit A5 Douglas Park
Stone Business Park
Stone
ST15 0YJ
United Kingdom

VAT Number: 120 9546 28

Business Registration Number: 07699660