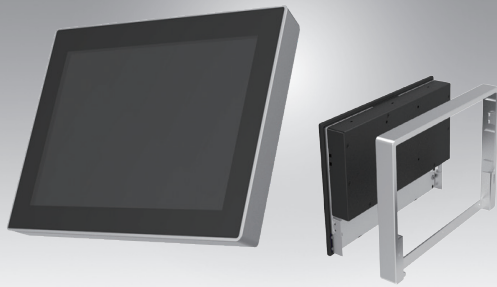


UTC-510 (PoE)

10.1" Ubiquitous Touch Computer UTC-510D with Intel® Bay Trail N2807 / J1900

Preliminary



Features

- Low Power & Fanless design
- Built-in Intel® Bay Trail N2807 / J1900 (UTC-510D)
- Providing Natural Viewing Experience with 16:10 10.1" Display
- Front panel complies with IP65 protection standard
- Landscape & Portrait screen mode support by different applications
- VESA 75 mm standard mounting holes for varied mounting demands
- Detachable plastic frame design for panel mount applications
- POE supported on Bay Trail N2807/J1900 platform



Introduction

UTC-510 features an all-in-one computing system equipped with wide format, touch based LCD panel. It is easy to integrate key peripherals and display systems for diversified self-service and interactive signage deploy in different application areas. The systems deliver updated information with well-designed interactive interfaces, fully ensure relevant content and targeted promotions are delivered. UTC series touch panel computers are the best investments to enhance user satisfaction, further brand equity, and maximize business profits.

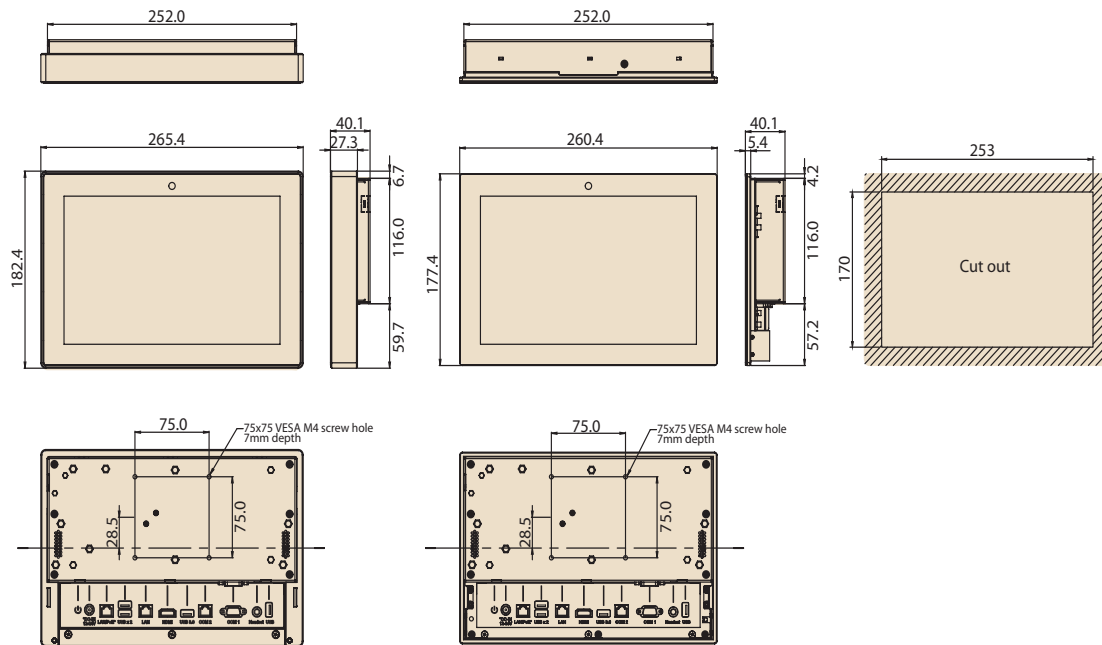
Specifications

Processor System	CPU	Intel® Celeron N2807 (UTC-510D)	Intel® Celeron J1900 (UTC-510D)
	Base Frequency	1.58 GHz (Dual-Core)	2 GHz (Quad-Core)
	Cache	L2 Cache 1MB	L2 Cache 2MB
	Memory	1 x SO-DIMM DDR3L 1333 MHz up to 8 GB	1 x SO-DIMM DDR3L 1333 MHz up to 8 GB
	HDD	1 x 2.5 internal SATA HDD bay	
	Network (LAN)	2 x Gigabit Ethernet ports (Supports Wake on LAN)	
	I/O ports	2 x RS-232 COM (COM2 RS-422/485 supported)*	
		3 x USB 2.0 / 1 x USB 3.0 / 1 x USB 2.0 (optional)	
		2 x Gigabit Ethernet ports (1 with POE)	
		Headphone with MIC x1	
	Stereo Speaker	2 W x 2	
	Bus expansion	1 Full size MiniPCIe/mSATA 1 Half size MiniPCIe	
OS Support	Mounting	VESA 75 x 75 mm	
	Dimensions (W x H x D)	265.40 x 182.40 x 39.55 mm	
	Weight	1.80 kg (3.97 lbs)	
		Windows Embedded 7, Windows Embedded 8, Window 10 IoT Enterprise, Linux Ubuntu 14.04, Android 4.4.2	
	Operating Temperature	0 ~ 45° C (32 ~ 113° F)	0 ~ 40° C (32 ~ 104° F)
	Relative Humidity	10 ~ 95% @ 40° C non-condensing	
Environmental Specifications	Vibration	1G*	
	Shock	5G peak acceleration (11 msec. duration)	
	Certification	CE, FCC, CB, UL, CCC, BSMI	
	Front Panel Protection	IP 65 Compliant	
	POE	IEEE 802.3at/30W	
Power Supply	DC Input Rating	Optional (12 V/3 A ~ 24 V/1.5 A, 36W ITE Adapter)	
	Power consumption	Typical 10W Max. 20W	
LCD Display	Size/Type	10.1" TFT LCD with LED backlight	
	Max. Resolution	1280 x 800	
	Max. Color	16.7M	
	Pixel Pitch (um)	169.5 x 169.5	
	Brightness (cd/m ²)	350	
	View Angle	170 / 170	
Touch Screen Option (PE/GE)	Camera	5 Mega Pixel (Optional)	
	Type	Projected Capacitive. Glass Panel	
	Light Transmission	80% ± 5% / 90%	
	Controller	USB Interface / -	

UTC-510

Dimensions

Unit: mm



Ordering Information

Part No.	Description
UTC-510DP-APB0E	10.1" Intel Celeron N2807 Based fanless UTC with PCT.T/S 2GB RAM, PoE
UTC-510DP-APB1E	10.1" Intel Celeron J1900 Based fanless UTC with PCT.T/S 2GB RAM, PoE
1700001524	Power Cord 3P UL 10A 125V 180cm
170203180A	Power Cord 3P UK 2.5A/3A 250V 1.83M
170203183C	POWER Cord 3P Europe (WS-010+WS-083)183cm
1700021374-01	Power Cord 3P CCC 2.5A 250V 250cm (IEC60320-C5)
1960073820N001	IO Cover UTC-510
1931031500	Screws for IO Cover UTC-510(*2)

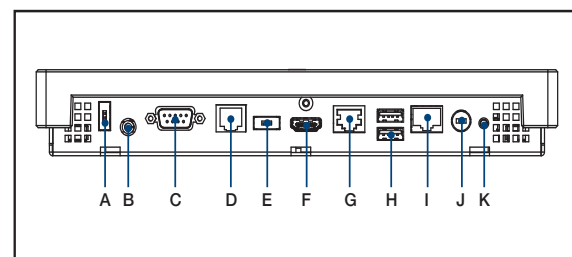
Peripherals for UTC-510 series

Part No.	Description
UTC-510P-R01E	RFID Reader For UTC-510 (USB connection)
UTC-510P-B01E	1D Barcode Scanner for UTC-510 (USB connection)
UTC-510P-B02E	2D Barcode Scanner for UTC-510 (USB connection)
UTC-510P-M01E	Magnet Strip Reader For UTC-510 (USB connection)

Installation Accessory

Part No.	Description
UTC-WALL-MOUNT1E	Wall Mount kit for UTC-520/515/510
UTC-WALL-MOUNT4E	UTC-510 VESA mount (75 x 75)
UTC-S03-STANDE	UTC 75*75 mm Desktop Stand
UTC-510-STAND0E	UTC-510 desktop stand
1960074091N000	UTC-510 Panel Mount Clamper (*4)
1930005598	UTC-510 Panel Mount Screw (*4)

Fully- Integrated I/O



- A. USB 2.0* (DC version only)
- B. Headset
- C. COM1
- D. COM2
- E. USB 3.0* (DC version only)
- F. HDMI
- G. LAN Ports
- H. USB 2.0 x 2
- I. LAN/PoE Ports
- J. DC Power jack
- K. Power switch

* UTC-510 (PoE) – A PoE Powered Device (PD) is a device powered by a PSE and thus consumes energy.

Please do take a Power sourcing equipment (PSE) which follows IEEE 802.3at PoE standard, also known as PoE+ or PoE plus, provides up to 30W of DC power output. Only 25.5 W input is assured to be available at the powered device as some power dissipates in the cable.

For Standard UTC-510 PoE Version, 1 x USB 2.0 (A port) and 1 x USB 3.0 (E port) are not suggested to use.

The customer can change the configuration only when total power input is under 25.5 W.

Assured Systems

Assured Systems is a leading technology company with over 1,500 regular clients in 80 countries, deploying over 85,000 systems to a diverse customer base in 12 years of business. We offer high-quality and innovative rugged computing, display, networking and data collection solutions to the embedded, industrial, and digital-out-of-home market sectors.

US

sales@assured-systems.com

Sales: +1 347 719 4508
Support: +1 347 719 4508

1309 Coffeen Ave
Ste 1200
Sheridan
WY 82801
USA

EMEA

sales@assured-systems.com

Sales: +44 (0)1785 879 050
Support: +44 (0)1785 879 050

Unit A5 Douglas Park
Stone Business Park
Stone
ST15 0YJ
United Kingdom

VAT Number: 120 9546 28
Business Registration Number: 07699660