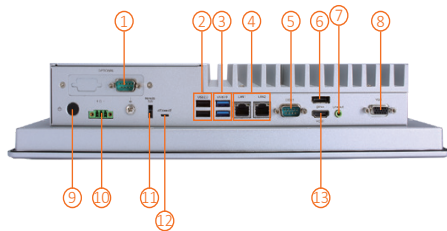


GOT321W-521

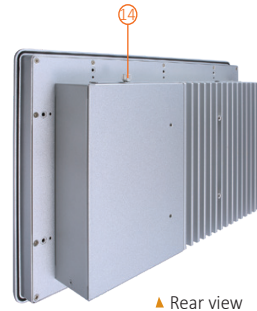
21.5" FHD TFT Expandable Touch Panel Computer with LGA1151 9th/8th Gen Intel® Core™ i7/i5/i3, Intel® Pentium® Gold or Intel® Celeron® Processor (up to 35W)



- | | |
|--------------------|---------------------------------------|
| 1. 1 x COM (cable) | 8. 1 x VGA |
| 2. 2 x USB 2.0 | 9. Power button (ATX) |
| 3. 2 x USB 3.0 | 10. Terminal block for DC power input |
| 4. 2 x LAN | 11. Remote power switch |
| 5. 1 x COM | 12. AT/ATX selectable switch |
| 6. 1 x DisplayPort | 13. 1 x HDMI |
| 7. 1 x Line-out | 14. Swappable HDD |

Features

- 21.5" FHD 10-point multi-touch projected capacitive widescreen or 5-wire resistive touch
- Fanless design with LGA1151 9th/8th gen Intel® Core™ i7/i5/i3, Intel® Pentium® Gold or Intel® Celeron® processor
- Supports WLAN module and antenna (optional)
- 2.5" SATA HDD/SSD
- 2 LAN, 4 USB, 2 COM, 1 HDMI, 1 DisplayPort, and 1 VGA
- IP65-rated aluminum front bezel
- Supports panel mount, VESA mount, and wall mount



Introduction

The GOT321W-521 is a fanless panel PC with 21.5-inch FHD LCD and supports LGA1151 9th/8th gen Intel® Core™ i7/i5/i3, Intel® Pentium® Gold or Intel® Celeron® processor (up to 35W). It also provides M.2 Key E and PCI Express Mini Card slots for add-on devices (e.g. Wi-Fi module) for factory automation and oil pipe monitoring system.

21.5-inch FHD LCD with PCT or Resistive Touch

The GOT321W-521 supports 250 nits brightness with FHD resolution. Equipped with projected capacitive multi-touch screen or 5-wire resistive touch, the GOT321W-521 is user-friendly for operators. The touch glass surface is also up to 3H for anti scratch.

Specifications

Front Bezel	Aluminum w/ IP65/NEMA 4 rugged protection	
LCD Panel	Display Type	21.5" FHD TFT
	Brightness	250 nits
	Resolution	1920 x 1080 pixels
	Viewing Angle	178°/178°

Main System	CPU	LGA1151 9th/8th gen Intel® Core™ i7/i5/i3, Intel® Pentium® Gold or Intel® Celeron® processor (up to 35W)
	Chipset	Intel® H310
	System Memory	1 x 260-pin DDR4-2666/2400 SO-DIMM, up to 32GB
	BIOS	AMI UEFI BIOS
	Storage	1 x mSATA 1 x 2.5" SATA HDD/SSD (7 mm and 9.5 mm height; removable)
	Drive	N/A
	Watchdog Timer	255 levels, 0 to 255 sec.
	Onboard Graphics	Intel® integrated Gfx graphic engine
IO Connector	1 x 9-pin D-sub Male for RS-232 1 x RS-232/422/485 2 x RJ-45 GbE LAN 2 x USB 3.0 2 x USB 2.0 1 x Phoenix-type connector for DC power input 1 x Switch for power on/off (ATX) 1 x Line-out 1 x HDMI 1.4b 1 x DisplayPort v1.2 (DisplayPort++) 1 x VGA 1 x Remote power switch 1 x AT/ATX switch (DC type only) 1 x Grounding hole (DC Version)	
TPM	TPM 2.0	
Expansion Interface	1 x Full-size PCI Express Mini Card slot (PCIe + SATA + USB) 1 x M.2 Key E 2230 (for Wi-Fi)	
Touchscreen	10-point projected capacitive multi-touch 5-wire flat resistive touch	
Power Supply	+12V/+19V/+24VDC 1 x Terminal block	
Power Consumption	105W	
Dimensions	547.59 mm (21.56") (W) x 75.6 mm (2.98") (D) x 339.05 mm (13.49") (H)	
Packing Dimensions	720 mm (28.34") (W) x 210 mm (8.27") (D) x 550 mm (2.17") (H)	
Weight (net/gross)	8.4 kg (18.5 lb)/11.3 kg (24.9 lb)	
Operating Temperature	0°C to +50°C (+32°F to +122°F)	
Relative Humidity	20% to 90% @ +40°C; non-condensing	
Operating Vibration	1.0G, 5 - 500Hz, random	
Certifications	CE	

Ordering Information

GOT321W-521-C-DC (P/N: E22B321105)	21.5" FHD TFT fanless touch panel computer with LGA1151 socket 9th/8th gen Intel® Core™ i7/i5/i3, Intel® Pentium® Gold or Intel® Celeron® processor (up to 35W), projected capacitive multitouch screen, and 24 VDC terminal block with small Phoenix connector
GOT321W-521-R-DC (P/N: E22B321106)	21.5" FHD TFT fanless touch panel computer with LGA1151 socket 9th/8th gen Intel® Core™ i7/i5/i3, Intel® Pentium® Gold or Intel® Celeron® processor (up to 35W), resistive touch screen, and 24 VDC terminal block with small Phoenix connector

* Other configuration by request

* Specification and certifications may vary based on different requirements

Packing List

- 1 x GOT321W-521
- 1 x Phoenix connector
- 1 x Panel mount kit

Optional Accessories

Wi-Fi kit	
881231770A0E	Wall mount kit
509000001500	Adaptor 24V/120W, wire only, FSP120-AAAN3
594K6220210E	Remote power cable, L=720mm

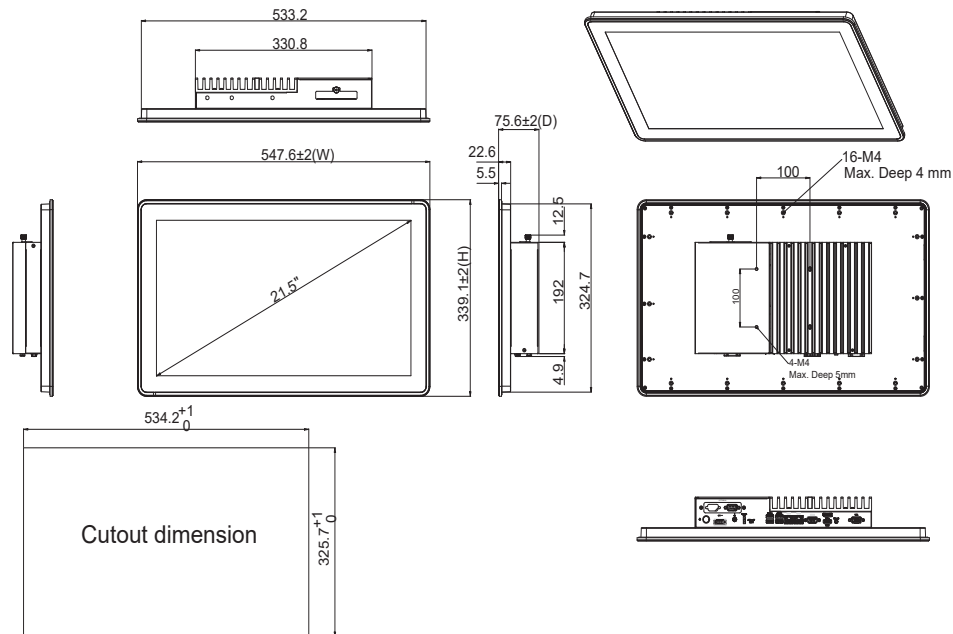
Optional EOS Installation

Windows® 10 IoT Enterprise

Optional OS Installation

Windows® 10

Dimensions



Assured Systems

Assured Systems is a leading technology company with over 1,500 regular clients in 80 countries, deploying over 85,000 systems to a diverse customer base in 12 years of business. We offer high-quality and innovative rugged computing, display, networking and data collection solutions to the embedded, industrial, and digital-out-of-home market sectors.

US

sales@assured-systems.com

Sales: +1 347 719 4508
Support: +1 347 719 4508

1309 Coffeen Ave
Ste 1200
Sheridan
WY 82801
USA

EMEA

sales@assured-systems.com

Sales: +44 (0)1785 879 050
Support: +44 (0)1785 879 050

Unit A5 Douglas Park
Stone Business Park
Stone
ST15 0YJ
United Kingdom

VAT Number: 120 9546 28
Business Registration Number: 07699660