



Industrial Solutions Partner!

SSF/SSH2735-A
27.3" Resizing LCD, 1000 nits LED backlight, 945x1080 Square aspect ratio 8:9

SSF/SSH2735-A is an innovative Square, sunlight readable, LED backlight LCD display. It provides LCD panel with specific ratios for digital signage, public transportation, exhibition hall, department store, vending machine and industrial applications. Incorporating with A.D. control board and backlight design, it is high brightness and sunlight readable panel, can display high-quality video with energy-efficient.

Key Features

- Resizing LCD
- Square Screen (8 : 9)
- Sunlight Readable
- LED Backlight
- High Brightness 1000 nits
- Low Power Consumption
- Wide Dimming
- Slim Bezel
- Life Expectancy (70,000hrs)
- Wide Viewing Angle



Specifications Preliminary

Model No.	SSF/SSH2735-A
Description	27.3" Resizing LCD, 1000 nits LED backlight, 945x1080
Display Area	457.85*523.26 mm
Brightness	1000 cd/m ²
Resolution	945 x 1080
Aspect Ratio	8 : 9
Contrast Ratio	3000:1
Pixel Pitch (mm)	0.4845 (H) x 0.4845(W)
Viewing Angle	178°(H), 178°(V)
Display Colors	16.7M
Response Time (Typical)	6.5 ms
Sync	LVDS
Power Consumption	50W
Dimensions (mm)	502.7 x 557.1 x 18.7
Weight (Net)	4.1 kg
LED Driving Board	LID27A
Control Board (Optional)	AD2662GDHMA
<input type="checkbox"/> AD2662GDHMA	VGA + DVI + HDMI + Audio
F / R Control Button	5 Key / 4 Key
<input type="checkbox"/> 4 Key	Power Switch, Menu, Select (+,-),
OSD Menu	Brightness, Contrast, H/V Position, Color, Phase, Clock...
Optional	N/A

Specifications are subject to change without notice.
All brands or product names are trademarks or registered trademarks of their respective companies.

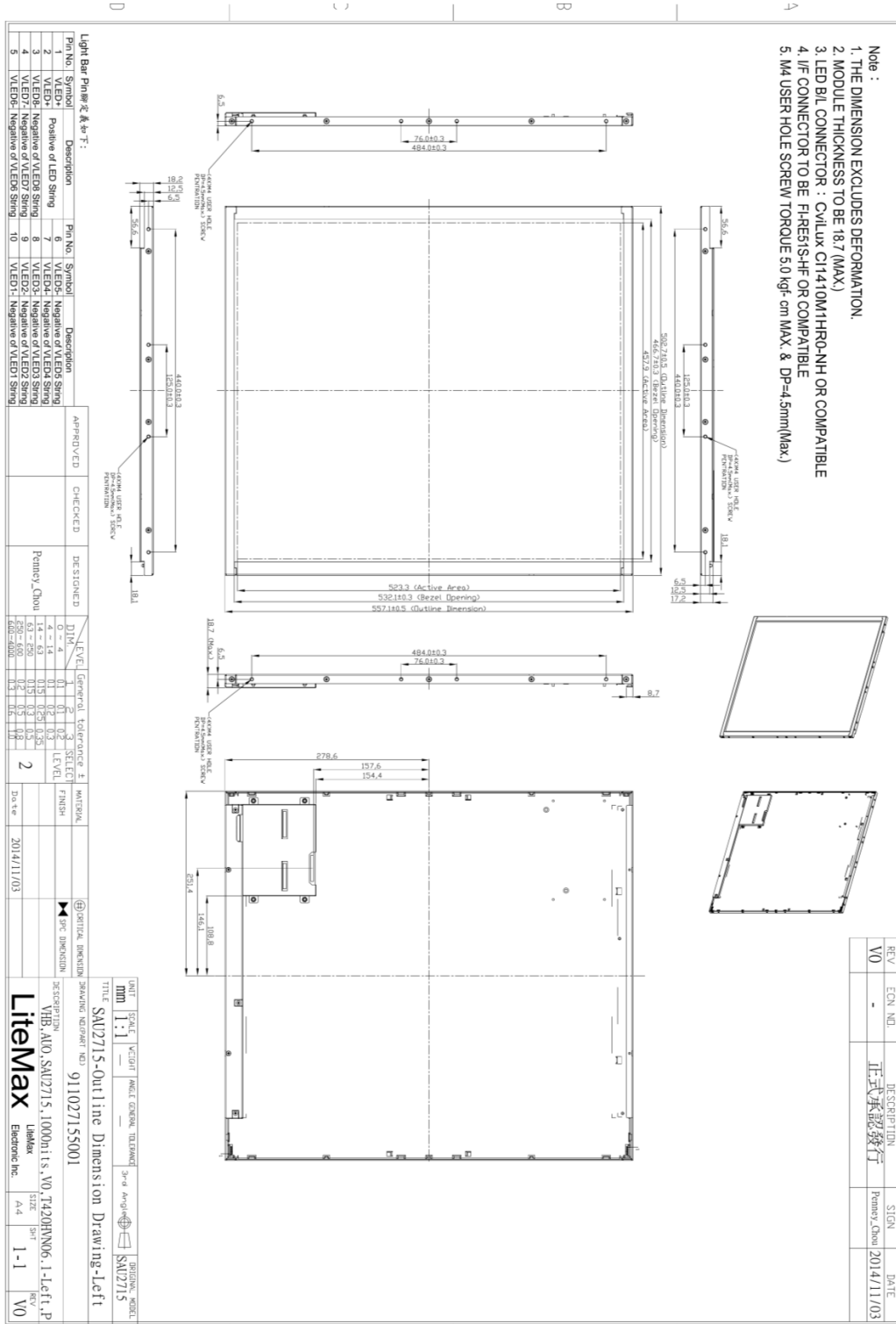
SSF= Panel + LED Driving Board
SSH= Panel + LED Driving Board + Control Board



Mechanical Drawing

Outline Dimensions

Unit: mm



Pin No.	Symbol	Description	Pin No.	Symbol	Description
1	VLED+	Positive of LED String	6	VLED3-	Negative of VLED3 String
2	VLED-	Negative of LED String	7	VLED4-	Negative of VLED4 String
3	VLED5-	Negative of VLED5 String	8	VLED1-	Negative of VLED1 String
4	VLED7-	Negative of VLED7 String	9	VLED2-	Negative of VLED2 String
5	VLED6-	Negative of VLED6 String	10	VLED1-	Negative of VLED1 String

APPROVED	CHECKED	DESIGNED
		Penny Chau

LEVEL	General Tolerance ±	SELECT	MATERIAL
1	0.1	3	
2	0.15	2	
3	0.2	1	
4	0.3	0	
5	0.5	0	
6	0.8	0	
7	1.0	0	
8	1.5	0	
9	2.0	0	
10	3.0	0	
11	4.0	0	
12	5.0	0	
13	6.0	0	
14	8.0	0	
15	10.0	0	
16	12.0	0	
17	15.0	0	
18	20.0	0	
19	25.0	0	
20	30.0	0	
21	40.0	0	
22	50.0	0	
23	63.0	0	
24	80.0	0	
25	100.0	0	
26	125.0	0	
27	160.0	0	
28	200.0	0	
29	250.0	0	
30	315.0	0	
31	400.0	0	
32	500.0	0	
33	630.0	0	
34	800.0	0	
35	1000.0	0	

DATE	2014/11/03
DATE	2014/11/03

UNIT	SCALE	WEIGHT	RAUL	GENSH	TELEMARK	3-d	APP	DR	DR	DR	DR
mm	1:1										

TITLE	SAU2715-Outline Dimension Drawing-Left
DESCRIPTION	YH5.A10.SAU2715.1000h1.s.V0.T420HW06.1-Left.P
DATE	2014/11/03
DESIGNER	Penny Chau
CHECKER	
APPROVER	
DATE	2014/11/03
SCALE	1:1
UNIT	mm
DR	V0



Industrial Solutions Partner!

Ordering Information

Model Name	Description
SSF2735-ANN-A01	27.3",1000nits,945*1080, LID27A,V01 (5 in 1)
SSH2735-ANN-G01	27.3",1000nits,945*1080, LID27A, AD2662GM,DC12V ,V01 (5 in 1)

Optional Accessories

Part Number	Description
810618301010 (Optional)	CABLE.POWER.AC.1830mm.(US Type).3PIN PLUG TO SOCKET.SVT(SPT-2)18AWG 3C BLACK,P.
810618301090 (Optional)	CABLE,POWER,AC,1830mm.(EU Type) 3PIN PLUG TO.SOCKET,H05VV-F 3G.0.75MMSQ BLACK,P
810618301050 (Optional)	CABLE,POWER,AC,1830mm.UK(FUSE) 3PIN PLUG TO.SOCKET,H05VV-F 3C(3G) 0.75MMSQ BLACK,P
810618301170 (Optional)	CABLE.POWER,AC,1830mm. (AU Type) 3PIN PLUG TO 2P SOCKET.LTSA 0.75MMSQ BLACK,P
810618301030 (Optional)	CABLE.POWER.AC.1830mm.(JP Type).2PIN PLUG Y TERMINAL TO. SOCKET.VCTF 3C 0.75MMSQ BLACK,P

Assured Systems

Assured Systems is a leading technology company with over 1,500 regular clients in 80 countries, deploying over 85,000 systems to a diverse customer base in 12 years of business. We offer high-quality and innovative rugged computing, display, networking and data collection solutions to the embedded, industrial, and digital-out-of-home market sectors.

US

sales@assured-systems.com

Sales: +1 347 719 4508
Support: +1 347 719 4508

1309 Coffeen Ave
Ste 1200
Sheridan
WY 82801
USA

EMEA

sales@assured-systems.com

Sales: +44 (0)1785 879 050
Support: +44 (0)1785 879 050

Unit A5 Douglas Park
Stone Business Park
Stone
ST15 0YJ
United Kingdom

VAT Number: 120 9546 28
Business Registration Number: 07699660