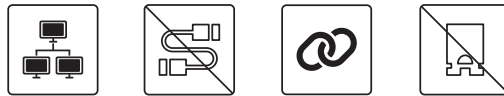


# CMI-10GLAN01

CMI Module with 2x Intel 10GbE LAN, RJ45 Port



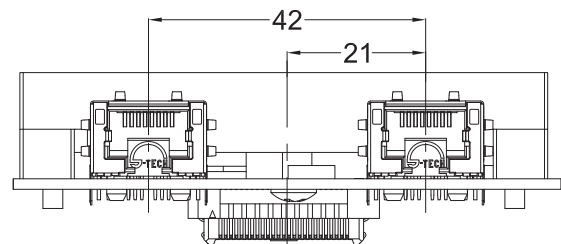
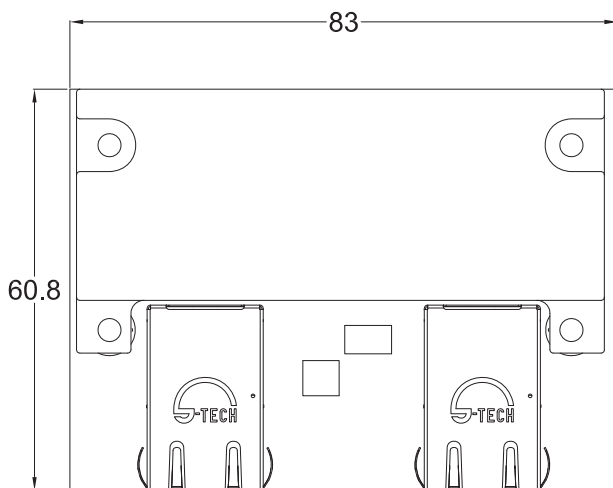
- CMI (Combined Multiple I/O) Technology
- Intel Ethernet Controller X550-AT2
- Support 10GbE Data Rate



## Specifications

Interface	CMI (Combined Multiple I/O) Interface
Ethernet Port	2 x Intel® X550-AT2 Ethernet Ports
Connector Type	RJ45
Data Rate Per Port	10/5/2.5/1GbE
Jumbo Frames Supported	Yes
Teaming Supported	Yes
Dimension ( W x D x H )	83 x 60.8 x 17.7 mm

## Dimensions



Unit: mm

## Ordering Information

### Available Models

**CMI-10GLAN01-R10** CMI Module with 2x Intel 10GbE LAN, RJ45 Port (83 x 60.8 x 17.7 mm)

### Package Check List

- CMI Module x1
- Heatsink x1
- Thermal Pad Pack x1
- Screw Pack x1

## Compatible List

Model No.	CMI-10GLAN01
GM-1000	V

## Assured Systems

Assured Systems is a leading technology company with over 1,500 regular clients in 80 countries, deploying over 85,000 systems to a diverse customer base in 12 years of business. We offer high-quality and innovative rugged computing, display, networking and data collection solutions to the embedded, industrial, and digital-out-of-home market sectors.

### US

[sales@assured-systems.com](mailto:sales@assured-systems.com)

Sales: +1 347 719 4508  
Support: +1 347 719 4508

1309 Coffeen Ave  
Ste 1200  
Sheridan  
WY 82801  
USA

### EMEA

[sales@assured-systems.com](mailto:sales@assured-systems.com)

Sales: +44 (0)1785 879 050  
Support: +44 (0)1785 879 050

Unit A5 Douglas Park  
Stone Business Park  
Stone  
ST15 0YJ  
United Kingdom

VAT Number: 120 9546 28  
Business Registration Number: 07699660