



Industrial Solutions Partner!

SSF/SSH1623

16.3" Resizing LCD, Brightness 400 nits, LED backlight, 1366x238 ultra wide aspect ratio 16:2.8

SSF/SSH1623 is an innovative ultra-wide, LED backlight LCD display. It provides LCD panel with specific ratios for digital signage, public transportation, exhibition hall, department store, vending machine and industrial applications.

Key Features

- Resizing LCD
- Ultra Wide Screen (16 : 2.8)
- LED Backlight
- Brightness 400nits
- Low Power Consumption
- High Uniformity
- Wide Dimming



Specifications

V1

Model No.	SSF/SSH1623
Description	16.3" Resizing LCD Module, 400nits, LED backlight, 1366x238
Display Area	409.8x71.4 mm
Brightness	400nits
Resolution	1366 x 238
Aspect Ratio	16 : 2.8
Contrast Ratio	1000:1
Pixel Pitch (mm)	0.3 x 0.3
Viewing Angle	170°(H), 160°(V)
Display Colors	16.7M
Response Time (Typical)	5 ms
Power Consumption	6.6W / 10W
Dimensions (mm)	431.8x95.8x15.1mm
Weight (Net)	0.5Kg
LED Driving Board	LID16B
Control Board (Optional)	<input type="checkbox"/> AD2662GDHMMVAR
<input type="checkbox"/> AD2662GM	VGA
<input type="checkbox"/> AD2662GDHMMVAR	VGA (Optional DVI/ HDMI/ AV/ S-Video/ Component / Audio/ RS232)
F / R Control Button	<input type="checkbox"/> 4 Key
<input type="checkbox"/> 4 Key	Power Switch, Menu, Select (+,-),
OSD Menu	Brightness, Contrast, H/V Position, Color, Phase, Clock...
Optional	<input type="checkbox"/> AOT <input type="checkbox"/> Touch Screen

Specifications are subject to change without notice.

All brands or product names are trademarks or registered trademarks of their respective companies.

SSF = Panel+ LED Driving Board

SSH = Panel+ LED Driving Board + Control Board

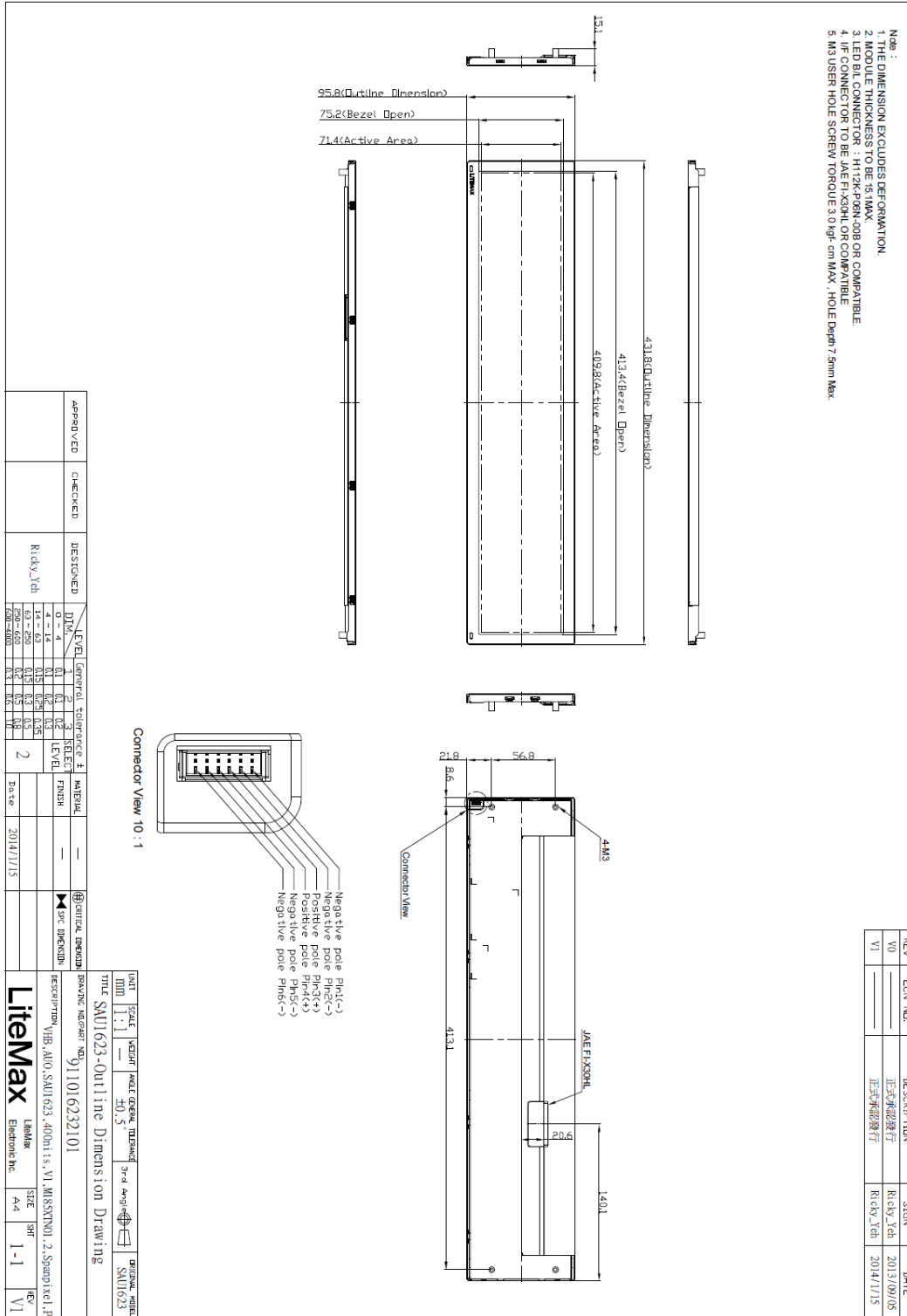


Industrial Solutions Partner!

Mechanical Drawing

Panel Outline Dimensions

Unit: mm





Industrial Solutions Partner!

Ordering Information

Part Number	Description
SSF1623-ENN-A02	16.3",400nits,1366*238,LID16B01,10 in 1,V01
SSH1623-ENN-G01	16.3",400nits,1366*238,LID16B,AD2662GM,5 in 1,V01

Optional Accessories

Part Number	Description
840612051210	ADAPTER,AC/DC,12V/5.4A,65W,Atech OEM A065112-TDx.4P SLIDING CAP,P
810618301010	CABLE.POWER.AC.1830mm USA type
810618301090	CABLE,POWER,AC,1830mm Europe type
810618301050	CABLE.POWER.AC.1830mm UK type
810618301170	CABLE.POWER,AC,1830mm Australia type
810618301030	CABLE.POWER.AC.1830mm Japan type

Assured Systems

Assured Systems is a leading technology company with over 1,500 regular clients in 80 countries, deploying over 85,000 systems to a diverse customer base in 12 years of business. We offer high-quality and innovative rugged computing, display, networking and data collection solutions to the embedded, industrial, and digital-out-of-home market sectors.

US

sales@assured-systems.com

Sales: +1 347 719 4508
Support: +1 347 719 4508

1309 Coffeen Ave
Ste 1200
Sheridan
WY 82801
USA

EMEA

sales@assured-systems.com

Sales: +44 (0)1785 879 050
Support: +44 (0)1785 879 050

Unit A5 Douglas Park
Stone Business Park
Stone
ST15 0YJ
United Kingdom

VAT Number: 120 9546 28
Business Registration Number: 07699660