



**SSF/SSH1033**

**9.9" Resizing LCD Display, Brightness is 700 nits, LED backlight, 800x200 ultra wide aspect ratio 16:4**

SSF/SSH1033 is an innovative ultra-wide, LED backlight LCD module. It provides LCD panel with specific ratios for digital signage, public transportation, exhibition hall, department store, and vending machine applications.

**Key Features**

- 9.9" resizing LCD
- Stretched display (aspect ratio of 16:4)
- Brightness of 700 nits
- Resolutions: 800 x 200
- Low power consumption
- BL MTBF: 70,000 hours



**Specifications** V1

Model No.	SSF1033	SSH1033
<b>Description</b>	9.9" Resizing LCD Display, 700nits, LED backlight, 800x200	
<b>Display Area</b>	246.6x 61.5 mm	
<b>Brightness</b>	700nits	
<b>Resolution</b>	800 x 200	
<b>Aspect Ratio</b>	16 : 4	
<b>Contrast Ratio</b>	600:1	
<b>Pixel Pitch (mm)</b>	0.3075 x 0.3075	
<b>Viewing Angle</b>	160°(H), 135°(V)	
<b>Display Colors</b>	262K	
<b>Response Time (Typical)</b>	35 ms	
<b>Power Consumption</b>	3.8W / 9.6W	
<b>Dimensions (mm)</b>	279x87.1x9mm	
<b>Weight (Net)</b>	0.25Kg / 0.38Kg	
<b>LED Driving Board</b>	On module	
<b>Control Board (Optional)</b>	<input type="checkbox"/> AD2662GVA	
<input type="checkbox"/> AD2662GVA	VGA+S-Video+Component+Audio	
<input type="checkbox"/> AD2662GVA + (DVI/ RS232 )	VGA+S-Video+Component+Audio (Optional DVI/ RS232)	
<b>F / R Control Button</b>	<input type="checkbox"/> 4 Key	
<input type="checkbox"/> 4 Key	Power Switch, Menu, Select (+,-),	
<b>OSD Menu</b>	Brightness, Contrast, H/V Position, Color, Phase, Clock...	
<b>Optional</b>	<input type="checkbox"/> AOT <input type="checkbox"/> Touch Screen	

Specifications are subject to change without notice.  
All brands or product names are trademarks or registered trademarks of their respective companies.

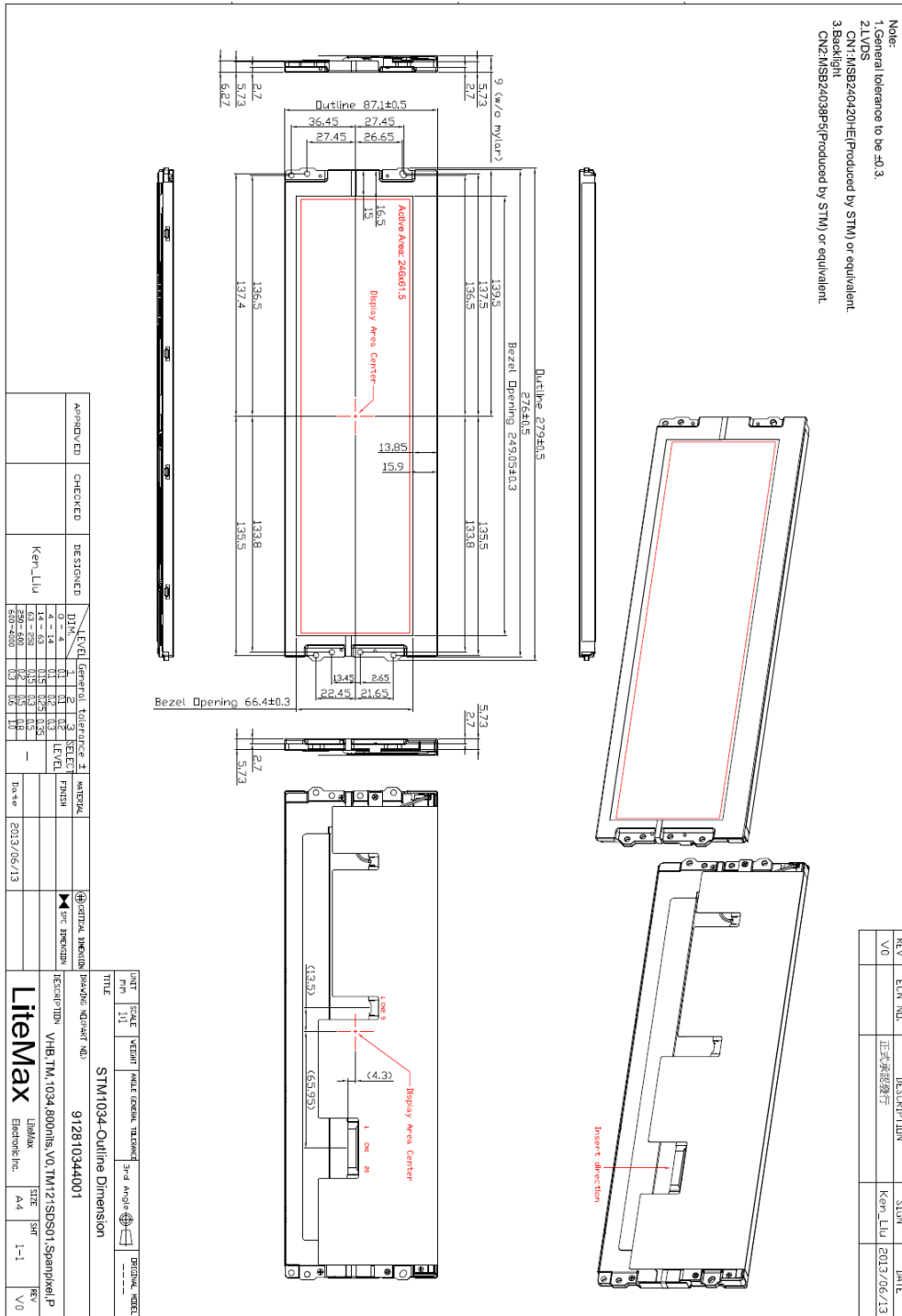
**SSF** = Panel+ LED Driving Board  
**SSH** = Panel+ LED Driving Board + Control Board



**Mechanical Drawing**

**Panel Outline Dimensions**

Unit: mm





*Industrial Solutions Partner!*

### Ordering Information

Part Number	Description
SSF1033-ENN-A01	9.9",700nits,800*200,LID on module,5 in 1,V1
SSH1033-ENN-G01	9.9",700nits,800*200,AD2662GVA,5 in 1,V1

### Optional Accessories

Part Number	Description
840612031100	ADAPTER.12V.3.33A.40W,PAA040F,P
810618301010	CABLE.POWER.AC.1830mm USA type
810618301090	CABLE.POWER.AC.1830mm Europe type
810618301050	CABLE.POWER.AC.1830mm UK type
810618301170	CABLE.POWER.AC.1830mm Australia type
810618301030	CABLE.POWER.AC.1830mm Japan type

## Assured Systems

Assured Systems is a leading technology company with over 1,500 regular clients in 80 countries, deploying over 85,000 systems to a diverse customer base in 12 years of business. We offer high-quality and innovative rugged computing, display, networking and data collection solutions to the embedded, industrial, and digital-out-of-home market sectors.

### US

[sales@assured-systems.com](mailto:sales@assured-systems.com)

Sales: +1 347 719 4508  
Support: +1 347 719 4508

1309 Coffeen Ave  
Ste 1200  
Sheridan  
WY 82801  
USA

### EMEA

[sales@assured-systems.com](mailto:sales@assured-systems.com)

Sales: +44 (0)1785 879 050  
Support: +44 (0)1785 879 050

Unit A5 Douglas Park  
Stone Business Park  
Stone  
ST15 0YJ  
United Kingdom

VAT Number: 120 9546 28  
Business Registration Number: 07699660