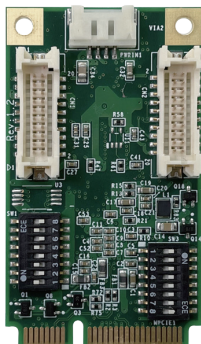


MEC-COM-M334

Mini-PCle Module with 4x RS-232/422/485
Serial Ports



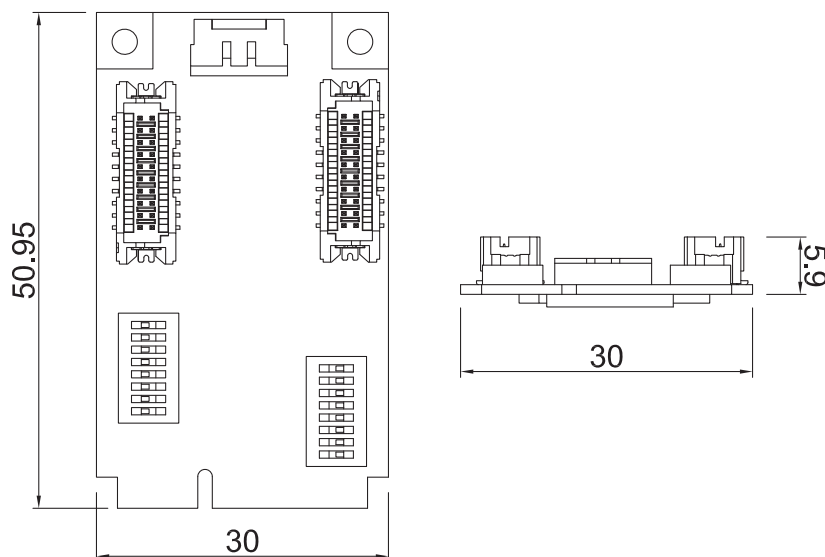
- MEC (Mini PCIe Expansion Card) Technology
- 4x RS-232/422/485 Ports Expansion



Specifications

Serial Port	4x RS-232 / 422 / 485 Ports
Connector Type	DB9
Baud Rate	Up to 921.6Kbps
Dimension (W x D x H)	30.00 x 50.95 mm
Operating System	Windows® 10, Windows® 8, Windows® 7
Certification	CE, FCC Class A

Dimensions



Unit: mm

Ordering Information

Available Models

Model No.	Description
MEC-COM-M334-TDB9	Mini-PCle Module with 4x RS-232/422/485 Serial Ports, 2x Thin DB9 Cable

Package Checklist

• Mini PCle Card x1	• Power Cable x1
• Standard Full Height Bracket with 2x DB9 Cutout x2	• Quick Installation Guide x1
• RS-232 / 422 / 485 Signal Cable x2	

Compatible List

Model No.	MEC-COM-M334-TDB9
DX-1000	V
DX-1100	V
DX-1200	V
GM-1000	V
P2000	V
P2100	V
P2200	V

Assured Systems

Assured Systems is a leading technology company with over 1,500 regular clients in 80 countries, deploying over 85,000 systems to a diverse customer base in 12 years of business. We offer high-quality and innovative rugged computing, display, networking and data collection solutions to the embedded, industrial, and digital-out-of-home market sectors.

US

sales@assured-systems.com

Sales: +1 347 719 4508

Support: +1 347 719 4508

1309 Coffeen Ave
Ste 1200
Sheridan
WY 82801
USA

EMEA

sales@assured-systems.com

Sales: +44 (0)1785 879 050

Support: +44 (0)1785 879 050

Unit A5 Douglas Park
Stone Business Park
Stone
ST15 0YJ
United Kingdom

VAT Number: 120 9546 28

Business Registration Number: 07699660