

22" Outdoor Digital Advertising Displays

Overview

Modifications

The screens can be upgraded in various ways including the addition of network features, a camera, more screen sizes or even touch functionality.

Ultra High Brightness Panel

2000cd/m² makes sure this display will always be seen whatever the weather. Over 5 times brighter than that of a standard domestic television to improve the displays image clarity.

Lockable Wall Mount

The screen comes with a wall mount that allows the screen to be securely placed in either landscape or portrait orientation.



Weather Proof IP65 Rating

An IP65 Rating means the display is able to withstand all weather conditions; wet and dry and also features waterproof over molded AV connectors.

Ambient Light Sensor

The display has a light sensor that changes the screens brightness depending on the ambient light ensuring the most suitable brightness at any time.

Advanced Temperature Control

Designed to run 24/7 in constant use the display has an advanced temperature control system to keep it running at the optimum temperature no matter the environment.

Toughened Glass

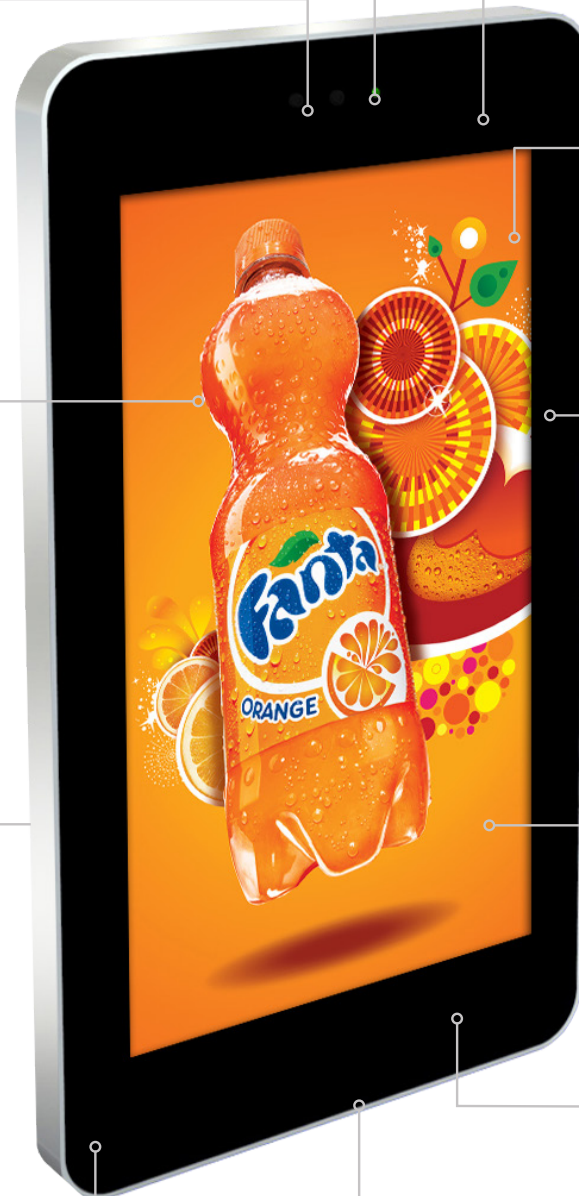
Extra strong glass protects the screens internal components and adds an extra layer of security against vandals.

Sturdy Enclosure

Made from mild steel the enclosure is strong enough to protect the displays components from outside harm such as vandals.

Anti Reflective Glass

Diffuses direct sunlight making the display easily readable in bright weather.



Dust Tight

The screen has the highest intrusion protection rating possible meaning it is virtually impossible for dust to enter the enclosure.

Easy Updates

Update the screen via the simple 'plug and play' USB method. You can control the screen from anywhere in the world by upgrading to a Network version. This allows you to update the screen via the cloud.



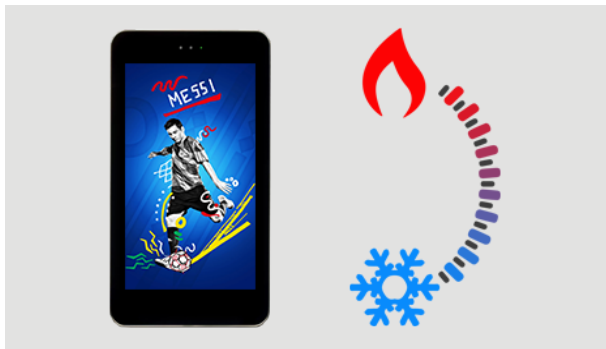
Sunlight Readable

Brightness is paramount when using outdoor screens, these displays use commercial grade Ultra High Brightness panels (2000 cd/m²); more than 5 times brighter than a standard home TV to allow easy readability in direct sunlight. The display also has an ambient light sensor that will alter the screens brightness based on the displays surrounding light levels. This leaves the screen with the best clarity while also conserving energy.



Outdoor Enclosure

Designed with robust, corrosion protected casing to protect against the elements and the public. With an IP65 rating, it keeps out all airborne particles as well as being protected from any wet weather conditions and also feature waterproof over molded AV connectors. The enclosures are made from mild steel and have thermally toughened glass.



Temperature Control

The internal air-conditioning system allows the screens to be in constant use in an outdoor environment. Internal fans keep the panel and other internal components at the optimum working temperature; ensuring a long and reliable life for your display.

Features

24/7 Usage



Built with commercial grade panel and components these displays are designed to run 24/7 in constant use; unlike domestic screens. The panel also has a lifespan of over 50,000 hours of continuous use.

Anti Reflective Glass



The glass frontage is also anti-reflective to help defuse direct sunlight shining on the display.

Easy Installation & Maintenance



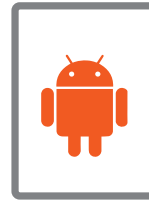
These units are designed with installation and maintenance in mind. As well as having a cabling channel built into the base of the unit there are also special fitting holes to allow you to permanently fix your screen in position. There is also internal space within the unit to hide any additional hardware, such as a PC, with easy access in the form of a front panel door.

Modifications Available



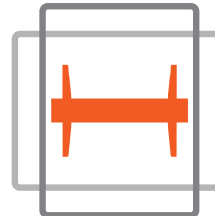
Whether your project calls for a touch screen, a double-sided display or even a bespoke screen size, we can meet your needs.

Integrated Media Player

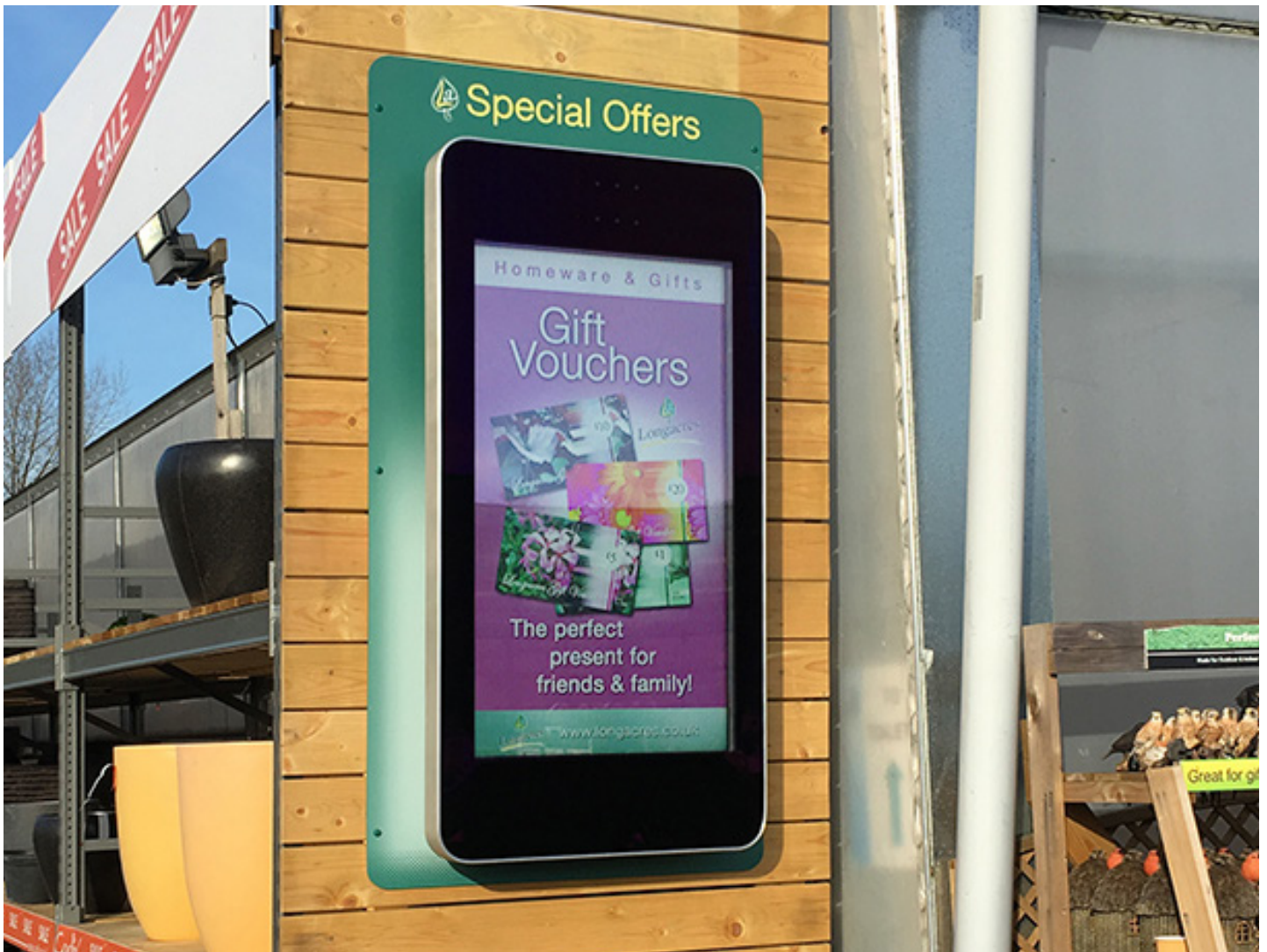


As well as having AV inputs, these displays also have a built-in HD media player allowing you to run content copied from a USB drive. Load your pictures and videos onto a USB memory stick then insert it into the display, the screen will then start playing the pictures and videos in a continuous loop. The displays can also be upgraded to be updated remotely via a cloud-based CMS.

Complimentary Wall Mount

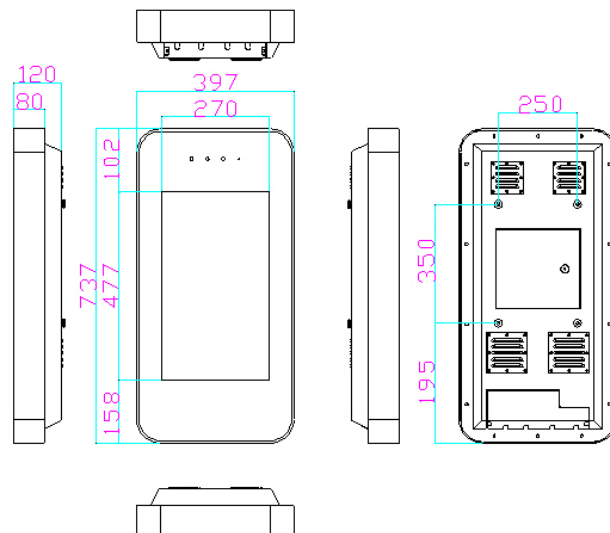


The display can be mounted in either landscape or portrait orientation, depending on the application. We also include a free wall mounting bracket that allows you to install your display in either landscape or portrait orientation and lock it in place.



22" Outdoor Digital Advertising Displays			
Panel	Display Size	22 Inch	
	Resolution	1080x1920	
	Pixel Pitch	0.2537x 0.2537	
	Display Area (mm)	270x477	
	Aspect Ratio	16:9	
	Brightness (cd/m ²)	2000	
	Colour	1.06 Billion	
	Viewing Angle	178°	
	Contrast Ratio	8000:1	
AV Inputs	Video	HDMI, VGA	
Power	Power Consumption (W)	130	
	Input Voltage	AC110~240V (50Hz~60Hz)	
Mechanical	Unit Size (WxHxD mm)	397x737x120	
	VESA Holes (mm)	350x250	
	Net Weight (kg)	20.05	
	Gross Weight (kg)	23.5	
Environmental	Operating Temperature:	-20 °C to 50 °C	
	Operating Humidity:	10% - 80%	
	Storage Temperature:	-30°C - 60°C	
	Storage Humidity:	5% - 90%	
	Enclosure Protection	IP65	
Feature	Internal Media Player	Media Formats	Video (MPG, AVI, MP4, RM, RMVB, TS), Audio (MP3, WMA), Image (JPG, GIF, BMP, PNG)
		Media Resolution	1080x1920
		Internal Memory	6GB
		CPU	Dual-Core Cortex-A9 @1.6GHz
		GPU	Mali-400 MP4 @400MHz
		RAM	1GB DDR3
		ROM	8GB NAND
		USB	USB2.0 HOST (x2)
		LAN	10/100M Ethernet (Network version screen only)
		Wi-Fi	802.11b/g/n (Network version screen only)
		OS	Android 4.2.2
	Graphic Engine	OpenGL ES 1.1/2.0, OpenVG 1.1	
Special	Images, Videos, Audio, Scrolling Text Message, On/Off Timer, On Screen Clock, Media Rotation		
Accessories	Included	AC Power Cable, Remote Control	
	Optional	Touch Screen Upgrade, Network Upgrade, Camera	

Technical Drawing:



Assured Systems

Assured Systems is a leading technology company with over 1,500 regular clients in 80 countries, deploying over 85,000 systems to a diverse customer base in 12 years of business. We offer high-quality and innovative rugged computing, display, networking and data collection solutions to the embedded, industrial, and digital-out-of-home market sectors.

US

sales@assured-systems.com

Sales: +1 347 719 4508
Support: +1 347 719 4508

1309 Coffeen Ave
Ste 1200
Sheridan
WY 82801
USA

EMEA

sales@assured-systems.com

Sales: +44 (0)1785 879 050
Support: +44 (0)1785 879 050

Unit A5 Douglas Park
Stone Business Park
Stone
ST15 0YJ
United Kingdom

VAT Number: 120 9546 28
Business Registration Number: 07699660