

# P1157E-500 NEW

15" XGA TFT Expandable Industrial Touch Panel Computer with 7th/6th Gen Intel® Core™ i7/i5/i3, Celeron® & Pentium® Processor and 1 PCI/PCIe Slot

## Features

- 15" XGA TFT LCD display
- LGA1151 socket 7th/6th gen Intel® Core™ i7/i5/i3, Celeron® & Pentium® processors
- Intel® H110 chipset
- Less screw design for easy installation
- 4 USB 3.0, 2 USB 2.0 and 4 COM
- One PCIe x4 or one PCIe slot
- Built-in speakers and optional Wi-Fi 802.11 b/g/n module
- Robust IP65 compliant aluminum front bezel
- 5 OSD keys in front panel



▲ Side view



▲ Back view



## Introduction

The P1157E-500 is a multimedia 15" touch panel PC for kiosk application. It has a fashionable mechanism design and industrial-grade material front bezel which can avoid damage from chemical corrosion. To meet the demands of multimedia application, the P1157E-500 is powered by a high performance LGA1151 socket 7th/6th generation Intel® Core™ processor with the Intel® H110 chipset. It features four COM ports, two Gigabit Ethernet and up to 32GB memory of dual-channel DDR4-2133 that delivers high computing capability for high performance-demanding applications. The industrial touch panel PC is most suitable for kiosk, factory and automation.

### Expandable for 1 PCIe or 1 PCI

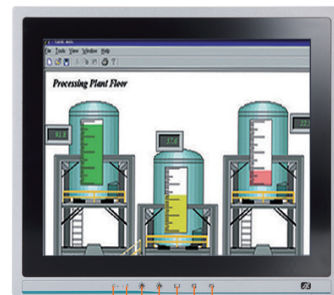
The P1157E-500 has 1 PCIe x4 or 1 PCI slot for expansion purpose. User can easily plug in standard half-size PCI or PCIe card based on any application needs.

### Speaker and WLAN Antenna Supported

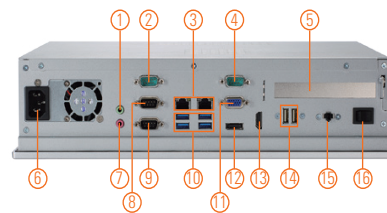
The P1157E-500 features built-in speakers for kiosk application to display multimedia content program. It also supports WLAN module antenna (optional) for wireless network connectivity.

### Friendly Less Screw Design

The P1157E-500 is designed with easy of maintenance in mind. There are only four screws on the back chassis, so that technicians can quickly remove the system's back cover with minimum effort.



1. Display status LED
2. SATA status LED
3. Brightness -
4. Brightness +
5. Display monitor ON/OFF
6. Volume -
7. Volume +



1. Line-out
2. RS-232 (COM 3)
3. RJ-45 for Gigabit Ethernet x 2
4. RS-232 (COM 4)
5. PCI or PCIe x4 expansion slot
6. AC Plug
7. Mic-in
8. RS-232/422/485 (COM 1)
9. RS-232 (COM 2)
10. USB 3.0 x 4
11. VGA
12. DisplayPort
13. HDMI
14. USB 2.0 x 2
15. Remote Power Switch
16. Switch for power on/off

## Specifications

Front Bezel	Aluminum w/ IP65/NEMA 4 rugged protection	
LCD Panel	Display Type	15" XGA TFT LCD
	Brightness	250 nits
	Resolution	1024 x 768 pixels
	Viewing Angle	160°/140°
Main System	CPU	LGA1151 socket 7th/6th gen Intel® Core™ i7/i5/i3, Celeron® & Pentium® processor
	Chipset	Intel® H110
	System Memory	2 x 288-pin DDR4-2133 Long-DIMM, up to 32GB
	BIOS	AMI UEFI BIOS
	Storage	1 x 3.5" or 1 x 2.5" SATA HDD / 2 x 2.5" SATA HDD (optional)
	Drive	N/A
	Watchdog Timer	255 levels, 1 ~ 255 sec.

\* All specifications and photos are subject to change without notice.

## Specifications

IO Connector	3 x RS-232 (COM 2 ~ 4) 1 x RS-232/422/485 (COM 1) 1 x HDMI 1 x VGA 1 x DisplayPort 4 x USB 3.0 2 x USB 2.0 2 x 10/100/1000 Mbps Ethernet (Intel® i219LM/i211AT) 1 x Audio (Mic-in/Line-out) 1 x Remote Power Switch
Expansion Interface	1 x PCIe x4 or 1 x PCI
Touchscreen	5-wire resistive type Light transmission 79% 1 million activations (typical) at a single point
Power Supply	100 ~ 240 VAC, 200 W
Power Consumption	97.6W
Dimensions	378.3 mm (14.89") (W) x 90 mm (3.54") (D) x 310.3 mm (12.22") (H)
Packing Dimension	510 mm (20.08") (W) x 186 mm (7.32") (D) x 532 mm (20.94") (H)
Weight(net/gross)	5.4 kg (11.90 lb)/7.8 kg (17.20 lb)
Environment	Operating temperature: 0°C ~ +50°C (+32°F ~ +122°F) Relative humidity: 10% ~ 90% @ +40°C, non-considering Operating vibration: 1.0G, 5 ~ 500 Hz, random
Certificate	CE

## Ordering Information

P1157E-500 w/ PCIe	15" XGA expandable industrial touch panel computer with LGA1151 socket 7th/6th gen Intel® Core™ i7/i5/i3, Pentium® & Celeron® processor, resistive touch screen and 1 PCIe x4 slot and 100 ~ 240 VAC
P1157E-500 w/ PCI	15" XGA expandable industrial touch panel computer with LGA1151 socket 7th/6th gen Intel® Core™ i7/i5/i3, Pentium® & Celeron® processor, resistive touch screen and 1 PCI slot and 100 ~ 240 VAC

\* Specification and certifications are based on requirements and may vary.

## Optional Accessories

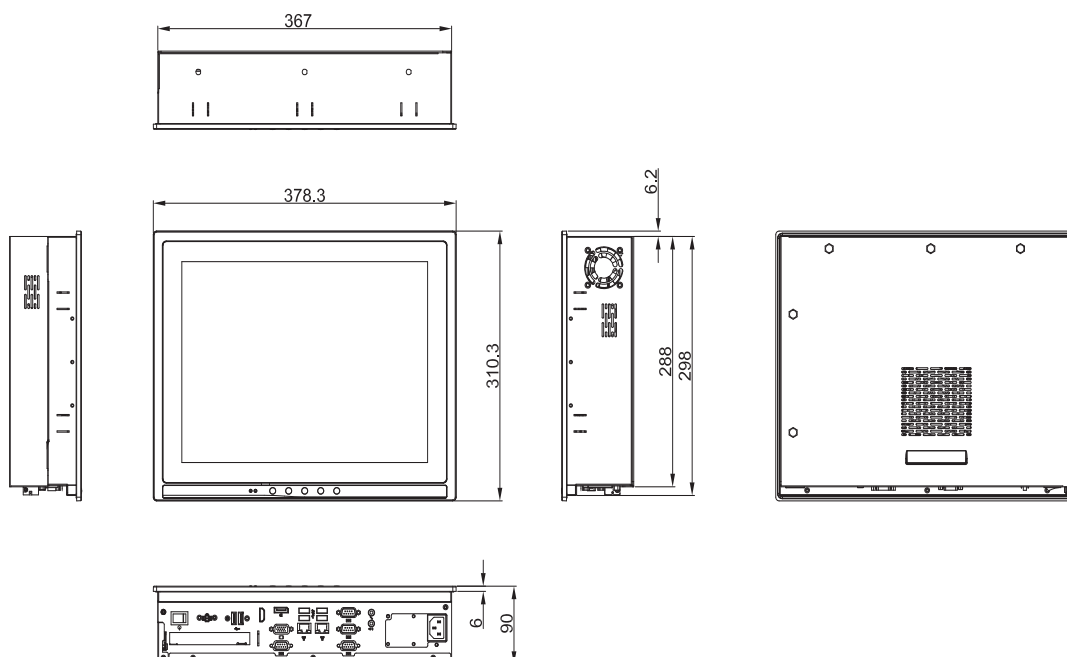
82211570380E	P1157E-500 2.5" slim HDD kit
82211970070E	VESA & wall mount kit
82231870240E	Wireless LAN kit (Sparklan 251N)
E981604011	ATC10 (VESA arm clamp type)
E981604012	ATW10 (VESA arm wall mount)
E983100017	VESA desktop stand (black)

## Optional OS Installation

Skylake: Windows® 7/8.1/10

Kabylake: Windows® 10 64-bit

## Dimensions



\* All specifications and photos are subject to change without notice.

[axiomtek.com](http://axiomtek.com)



© 2018 Axiomtek Co., Ltd. All rights reserved.

280

## Assured Systems

Assured Systems is a leading technology company with over 1,500 regular clients in 80 countries, deploying over 85,000 systems to a diverse customer base in 12 years of business. We offer high-quality and innovative rugged computing, display, networking and data collection solutions to the embedded, industrial, and digital-out-of-home market sectors.

### US

[sales@assured-systems.com](mailto:sales@assured-systems.com)

Sales: +1 347 719 4508

Support: +1 347 719 4508

1309 Coffeen Ave  
Ste 1200  
Sheridan  
WY 82801  
USA

### EMEA

[sales@assured-systems.com](mailto:sales@assured-systems.com)

Sales: +44 (0)1785 879 050

Support: +44 (0)1785 879 050

Unit A5 Douglas Park  
Stone Business Park  
Stone  
ST15 0YJ  
United Kingdom

VAT Number: 120 9546 28

Business Registration Number: 07699660