



Industrial Solutions Partner!

SSF/SSH 1722

17.2" Resizing LCD, 400 nits LED backlight, 1366x510 ultra wide aspect ratio 16:6

SSF/SSH1722 is an innovative ultra-wide, sunlight readable, LED backlight LCD display. It provides LCD panel with specific ratios for digital signage, public transportation, exhibition hall, department store, vending machine and industrial applications. Incorporating with A.D. control board and backlight design, it is high brightness and sunlight readable panel, can display high-quality video with energy-efficient.

Key Features

- Resizing LCD
- Ultra Wide Screen (16 : 6)
- Sunlight Readable
- LED Backlight
- High Brightness 400 nits
- Low Power Consumption
- High Uniformity
- Wide Dimming
- Life Expectancy (70,000hrs)
- Slim Bezel



Specifications		Preliminary
Model No.	SSF/SSH1722	
Description	17.2" Resizing LCD, 400 nits LED backlight, 1366x510	
Display Area	409.8 x 153.0 mm	
Brightness	400 cd/m ²	
Resolution	1366 x 510	
Aspect Ratio	16 : 6	
Contrast Ratio	1500:1	
Pixel Pitch (mm)	0.3 x 0.3	
Viewing Angle	170°(H), 160°(V)	
Display Colors	16.7M	
Response Time (Typical)	5 ms	
Sync	LVDS	
Power Consumption	15 W	
Dimensions (mm)	430.4 x 178.4 x 12.0 mm	
Weight (Net)	0.9 kg	
LED Driving Board	LID17	
Control Board (Optional)	AD2662GDHM	
<input type="checkbox"/> AD6038GD	VGA + DVI + HDMI	
<input type="checkbox"/> Others		
F / R Control Button	5 Key / 4 Key	
<input type="checkbox"/> 4 Key	Power Switch, Menu, Select (+,-),	
<input type="checkbox"/> 5 Key	Power Switch, Menu, Select (+,-), Auto	
OSD Menu	Brightness, Contrast, H/V Position, Color, Phase, Clock...	
Optional	<input type="checkbox"/> Touch Screen	

Specifications are subject to change without notice.
All brands or product names are trademarks or registered trademarks of their respective companies.

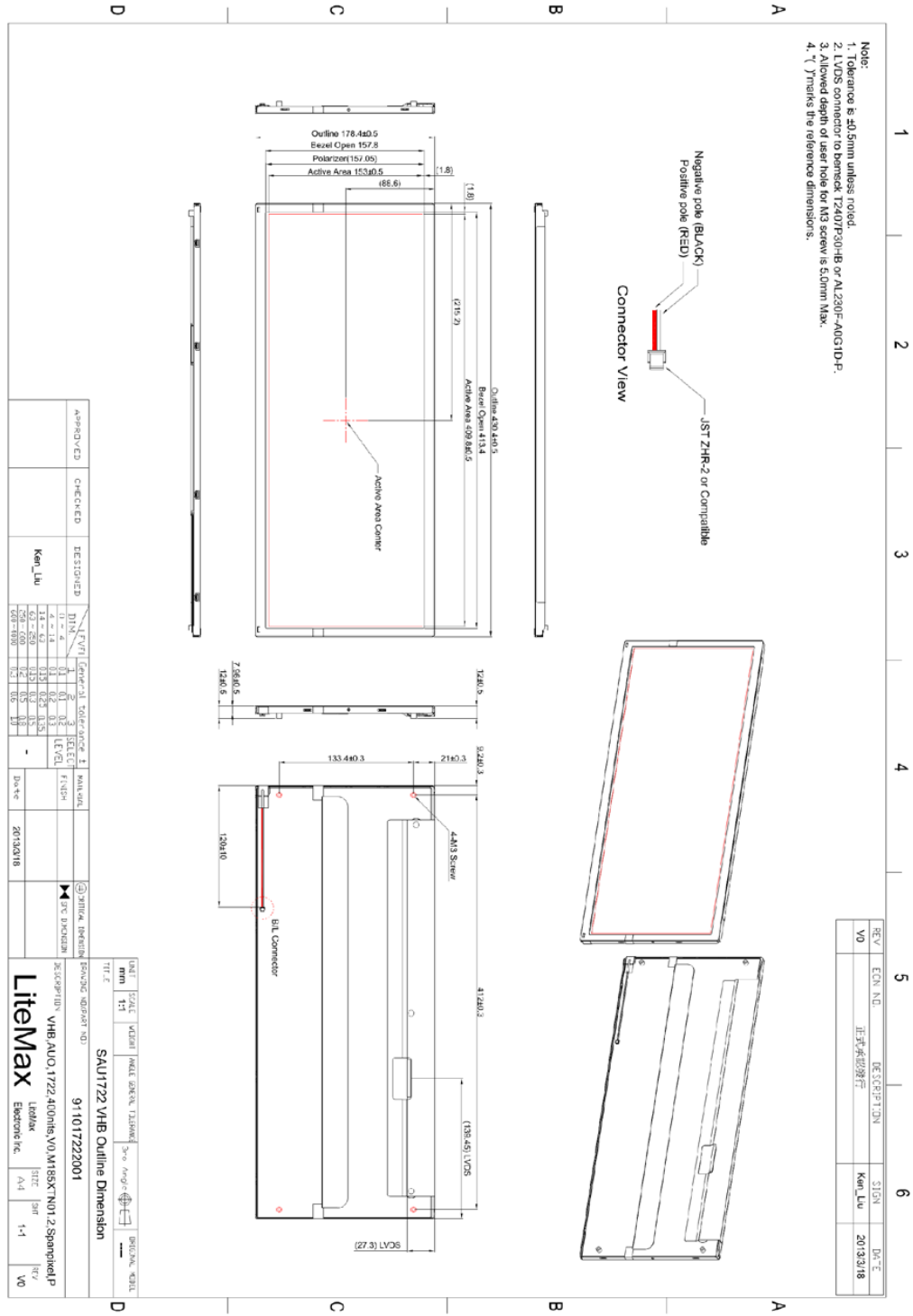
SSF = Panel+ LED Driving Board
SSH = Panel+ LED Driving Board + Control Board



Mechanical Drawing

Outline Dimensions

Unit: mm





Industrial Solutions Partner!

Ordering Information

Model Name	Description
SSF1722-ANN-A01	17.2",400nits,1366*512,LID17A.V01(4 in 1)
SSH1722-ANN-G01	17.2",400nits,1366*512,LID17A.AD2662GDHM,4 in 1,V1

Optional Accessories

Part Number	Description
840612051211	ADAPTER,AC/DC,12V/5.4A,64.8W,Power-Din-4P,Atech.A0605TD-120054.Efficiency-level-6,R
810618301010 (Optional)	CABLE.POWER.AC.1830mm.(US Type).3PIN PLUG TO SOCKET.SVT(SPT-2)18AWG 3C BLACK,P
810618301090 (Optional)	CABLE,POWER,AC,1830mm.(EU Type) 3PIN PLUG TO.SOCKET,H05VV-F 3G.0.75MMSQ BLACK,P
810618301050 (Optional)	CABLE,POWER,AC,1830mm.UK(FUSE) 3PIN PLUG TO.SOCKET,H05VV-F 3C(3G) 0.75MMSQ BLACK,P
810618301170 (Optional)	CABLE.POWER,AC,1830mm. (AU Type) 3PIN PLUG TO 2P SOCKET.LTSA 0.75MMSQ BLACK,P
810618301031 (Optional)	CABLE.POWER.AC.1830mm.(JP Type).2PIN PLUG Y TERMINAL TO. SOCKET.VCTF 3C 0.75MMSQ BLACK,P

Assured Systems

Assured Systems is a leading technology company with over 1,500 regular clients in 80 countries, deploying over 85,000 systems to a diverse customer base in 12 years of business. We offer high-quality and innovative rugged computing, display, networking and data collection solutions to the embedded, industrial, and digital-out-of-home market sectors.

US

sales@assured-systems.com

Sales: +1 347 719 4508
Support: +1 347 719 4508

1309 Coffeen Ave
Ste 1200
Sheridan
WY 82801
USA

EMEA

sales@assured-systems.com

Sales: +44 (0)1785 879 050
Support: +44 (0)1785 879 050

Unit A5 Douglas Park
Stone Business Park
Stone
ST15 0YJ
United Kingdom

VAT Number: 120 9546 28
Business Registration Number: 07699660