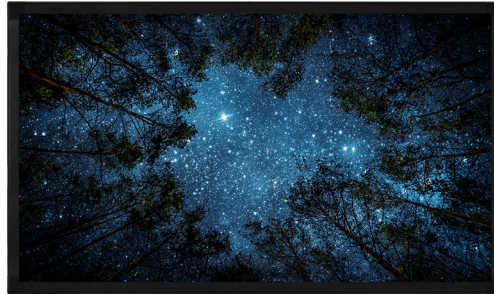
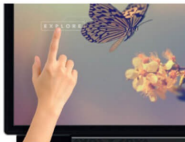


## Interactive Flat Panel Displays IFM55TH652/4

**VESTEL**

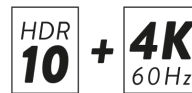


### Key Features



#### Simultaneous Smooth writing Multi - Touch

10 point touch support detects multiple touch points, enhancing the possibility of collaborative work. The screens also provide a precise and user friendly writing experience with its smooth surface.



#### HDR10 & 4K HDMI @60Hz

Displays supporting HDR10 allows HDR based content to be shown, giving a brighter and more dynamic picture. This is further enhanced due to the support of 4K 60Hz, allowing ultra sharp, smooth Video content to be presented.



#### Anti Glare Tempered Glass

Prevents light reflection and provides smooth touch performance with anti glare technology. Robust design with toughened glass material to avoid any damage to the screen



#### Collaborate, Annotate with Oktopus

Collaborate: View lessons, respond, share annotations, and take notes using any tablet or laptop Anntate: Works over browser content & existing applications Poll: Pose questions and gain immediate participant feedback, displaying results instantly.

## Panel

Screen Size	55"	Panel Technology	IPS
Backlight Type	Direct-Type LED	Brightness (typical)	400 cd/m²
Native Resolution	UHD: 3840 x 2160 - HDR10	Contrast Ratio (typical)	1300:1
Dynamic Contrast Ratio	40000:1	Panel Life Time ( Min. )	30000 Hr
Response Time (typical)	6 ms	Active Area (H x V)	1210 x 681 mm
Viewing Angle	178° Vert., 178° Hor. (89U/89D/89L/89R) @ CR>10	Color Value	16.7 M (8-bit)
Screen Treatment	2H	Haze Level	8%
Refresh Rate	60 Hz	Front Type	Black Super Narrow Bezel
Orientation	Horizontal	Operation Hours	16/7
Area of Usage	Indoor		

## Built-in System

Mainboard Model	17MB135VS
-----------------	-----------

## Monitor Connectivity

RGB Input	VGA(DE-15F)	RGB Output	N/A
Video Input	4xHDMI2.0, 2xUSB2.0, USB2.0(Internal)	Video Output	HDMI2.0
Audio Input	Line In L/R	Audio Output	Headphone, Optic SPDIF
External Control	RS232(DE-9F), Ethernet(RJ45), Service(RJ12)	External Sensor	RJ12

## Touch Interactivity

Type of Touch Technology	Infrared (IR) Technology	Continuous Touch Points	10 Points
Sensitivity	Any touch with finger, gloved hand or pointer	Connectivity	HID, TUIO, Flash
Compatibility	Windows®7, Windows®8, Windows®10, Vista, XP, Mac® OS, Linux, Android	Orientation	Landscape support
Calibration	No need	Accuracy	%90
Reporting Rate	Up to 450 fps	Glass Type	Anti Glared (AG), 4mm Tempered
Frame Rate	up to 450 fps	Communication	USB 2.0
Power Supply Mode	USB	Supply Voltage	DC 5V +/- 5%
Average Current	400mA	Response Time	10ms
Touch Accuracy	+/-2mm (over 90% area)	Touch Durability	Unlimited
HID Compatibility	Yes USB	Object Sizes for Touch	5mm

## Mechanical

Product Dimensions (WxDxH)	1280 x 123 x 751 mm	Package Dimensions (WxDxH)	1480 x 265 x 930 mm
Product Weight	29.45 kg	Package Weight	38.15 kg
Vesa Mounting	400 x 200 mm	Bezel Width	B:34   T:34   L/R:34 mm

## Environmental Conditions

Operating Temperature	+40°C / 0°C	Operating Humidity	90%
-----------------------	-------------	--------------------	-----

## Power

Power Supply	110 VAC - 240 VAC
--------------	-------------------



## Power Consumption

Typical	138 W	Maximum	180 W
Deep Standby	≤0.5W		

## Features

Main Features	USB-Autoplay, Auto-switch on Failover, Control Button Lock, HDMI Wake-Up	Mechanical Features	IR Touch, Joystick, IR Extender Support, Rocker Switch, Detachable power cable, Carrying handles, Detachable logo positioning, Cable Holders
Optional Features	OPS Compliance	Speaker	2 x 8 W

## Accessory

Standard	QSG, IB, Power Cord, Remote Control, RC Battery, Mounting Kit, Extension Brackets, IR Extender Cable
----------	---

## Certification

Safety	YES	EMC	YES
CE	YES	Reability Approval	YES

## Assured Systems

Assured Systems is a leading technology company with over 1,500 regular clients in 80 countries, deploying over 85,000 systems to a diverse customer base in 12 years of business. We offer high-quality and innovative rugged computing, display, networking and data collection solutions to the embedded, industrial, and digital-out-of-home market sectors.

### US

[sales@assured-systems.com](mailto:sales@assured-systems.com)

Sales: +1 347 719 4508

Support: +1 347 719 4508

1309 Coffeen Ave  
Ste 1200  
Sheridan  
WY 82801  
USA

### EMEA

[sales@assured-systems.com](mailto:sales@assured-systems.com)

Sales: +44 (0)1785 879 050

Support: +44 (0)1785 879 050

Unit A5 Douglas Park  
Stone Business Park  
Stone  
ST15 0YJ  
United Kingdom

VAT Number: 120 9546 28

Business Registration Number: 07699660